

DATASHEET

Rbx1 Rabbit Polyclonal Antibody

CAT. NO. APA14168

KEY FEATURES

| | | | |
|---------------|---|---------------|---------------------|
| Target | Rbx1 | Source / Host | Rabbit |
| Reactivity | Human, Mouse, Rat | Clonality | Polyclonal |
| Applications | WB, IF/ICC | Conjugation | Unconjugated |
| Form / Buffer | Liquid in 0.42% Potassium phosphate, 0.87% Sodium chloride, pH 7.3, 30% glycerol, and 0.01% sodium azide. | | Storage at -20°C |

BACKGROUND

E3 ubiquitin ligase component of multiple cullin-RING-based E3 ubiquitin-protein ligase (CRLs) complexes which mediate the ubiquitination and subsequent proteasomal degradation of target proteins, including proteins involved in cell cycle progression, signal transduction, transcription and transcription-coupled nucleotide excision repair complexes which mediate the ubiquitination and subsequent proteasomal degradation of target proteins, including proteins involved in cell cycle progression, signal transduction, transcription and transcription-coupled nucleotide excision repair . CRLs complexes and ARIH1 collaborate in tandem to mediate ubiquitination of target proteins, ARIH1 mediating addition of the first ubiquitin on CRLs targets .

APPLICATION

To ensure optimal assay performance, AREX recommends conducting reagent titration tailored to each testing system for optimal detection results.

| | |
|--------|----------------|
| WB | 1:500 - 1:2000 |
| IF/ICC | 1:50 - 1:200 |

*Results are sample-specific. Please refer to your local assay conditions and test parameters for reference.

PRODUCT OVERVIEW

| | |
|-------------------|--|
| Description | Rabbit polyclonal antibody to Rbx1 |
| Specificity | Recognizes endogenous levels of Rbx1 protein. |
| Antibody Type | Primary antibody |
| Immunogen | Recombinant fusion protein of human Rbx1 |
| Purification | The antibody was purified by immunogen affinity chromatography. |
| Molecular Weight | Predicted: 12 kD; Observed: 12 kD |
| Form/Buffer | Liquid in 0.42% Potassium phosphate, 0.87% Sodium chloride, pH 7.3, 30% glycerol, and 0.01% sodium azide. |
| Alternative Names | RNF75; ROC1; E3 ubiquitin-protein ligase RBX1; Protein ZYP; RING finger protein 75; RING-box protein 1; Rbx1; Regulator of cullins 1 |
| Gene Symbol | RBX1 |
| Entrez Gene | 9978(Human); 56438(Mouse) |
| SwissProt | P62877(Human); P62878(Mouse) |

*AREX continuously optimizes our products. Webpage content may not reflect the latest updates. For inquiries, please contact info@arexbio.com or your local distributor.

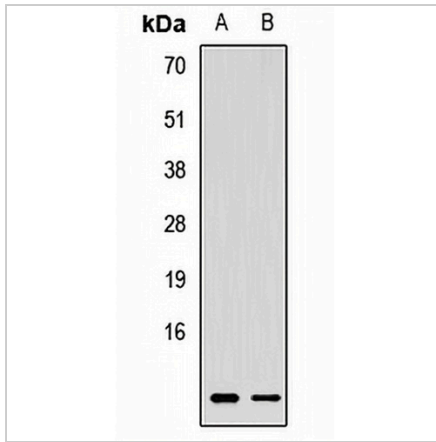
*Clone Number, Reactivity, Source/Host and Clonality can be found in the product name and Key Features section above.

DATASHEET

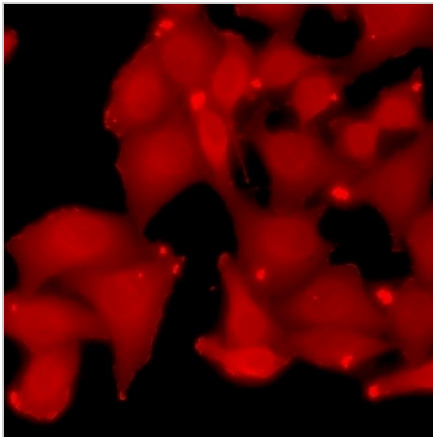
Rbx1 Rabbit Polyclonal Antibody

CAT. NO. APA14168

DATA



Western blot analysis of Rbx1 expression in MCF7 (A), mouse brain (B) whole cell lysates. (Predicted band size: 12 kD; Observed band size: 12 kD)



Immunofluorescent analysis of Rbx1 staining in MCF7 cells. Formalin-fixed cells were permeabilized with 0.1% Triton X-100 in TBS for 5-10 minutes and blocked with 3% BSA-PBS for 30 minutes at room temperature. Cells were probed with the primary antibody in 3% BSA-PBS and incubated overnight at 4 °C in a humidified chamber. Cells were washed with PBST and incubated with a DyLight 594-conjugated secondary antibody (red) in PBS at room temperature in the dark.

STORAGE

Store at 4°C short term. For long term storage, store at -20°C, avoiding freeze/thaw cycles.

NOTE

For Research Use Only. Not for diagnostic, therapeutics, prophylactic or in vivo use.