

DATASHEET

Cathepsin S Rabbit Polyclonal Antibody

CAT. NO. APA14172

KEY FEATURES

Target	Cathepsin S	Source / Host	Rabbit
Reactivity	Human, Mouse, Rat	Clonality	Polyclonal
Applications	WB	Conjugation	Unconjugated
Form / Buffer	Liquid in 0.42% Potassium phosphate, 0.87% Sodium chloride, pH 7.3, 30% glycerol, and 0.01% sodium azide.		Storage at-20°C

BACKGROUND

Thiol protease . Key protease responsible for the removal of the invariant chain from MHC class II molecules and MHC class II antigen presentation . The bond-specificity of this proteinase is in part similar to the specificities of cathepsin L . Elicits itch by mediating cleavage and activation of MRGPRX1 .

APPLICATION

To ensure optimal assay performance, AREX recommends conducting reagent titration tailored to each testing system for optimal detection results.

WB	1:500 - 1:1000
----	----------------

*Results are sample-specific. Please refer to your local assay conditions and test parameters for reference.

PRODUCT OVERVIEW

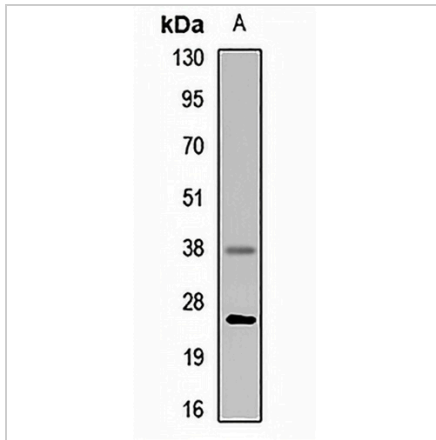
Description	Rabbit polyclonal antibody to Cathepsin S
Specificity	Recognizes endogenous levels of Cathepsin S protein.
Antibody Type	Primary antibody
Immunogen	Recombinant fusion protein of human Cathepsin S
Purification	The antibody was purified by immunogen affinity chromatography.
Molecular Weight	Predicted: 31; Observed: 25; 37 kD
Form/Buffer	Liquid in 0.42% Potassium phosphate, 0.87% Sodium chloride, pH 7.3, 30% glycerol, and 0.01% sodium azide.
Alternative Names	Cathepsin S
Gene Symbol	CTSS
Entrez Gene	1520(Human); 13040(Mouse)
SwissProt	P25774(Human); O70370(Mouse)

*AREX continuously optimizes our products. Webpage content may not reflect the latest updates. For inquiries, please contact info@arexbio.com or your local distributor.

*Clone Number, Reactivity, Source/Host and Clonality can be found in the product name and Key Features section above.

DATASHEET**Cathepsin S Rabbit Polyclonal Antibody**

CAT. NO. APA14172

DATA

Western blot analysis of Cathepsin S expression in mouse liver (A) whole cell lysates.
(Predicted band size: 31; 37 kD; Observed band size: 25; 37 kD)

STORAGE

Store at 4°C short term. For long term storage, store at -20°C, avoiding freeze/thaw cycles.

NOTE

For Research Use Only. Not for diagnostic, therapeutics, prophylactic or in vivo use.