

DATASHEET

Endothelial Lipase Rabbit Polyclonal Antibody

CAT. NO. APA14174

KEY FEATURES

Target	Endothelial Lipase	Source / Host	Rabbit
Reactivity	Human, Mouse, Rat	Clonality	Polyclonal
Applications	WB	Conjugation	Unconjugated
Form / Buffer	Liquid in 0.42% Potassium phosphate, 0.87% Sodium chloride, pH 7.3, 30% glycerol, and 0.01% sodium azide.		Storage at -20°C

BACKGROUND

Exerts both phospholipase and triglyceride lipase activities . More active as a phospholipase than a triglyceride lipase . Hydrolyzes triglycerides, both with short-chain fatty acyl groups (tributylin) and long-chain fatty acyl groups (triolein) with similar levels of activity toward both types of substrates . Hydrolyzes high density lipoproteins (HDL) more efficiently than other lipoproteins .

APPLICATION

To ensure optimal assay performance, AREX recommends conducting reagent titration tailored to each testing system for optimal detection results.

WB	1:500 - 1:1000
----	----------------

*Results are sample-specific. Please refer to your local assay conditions and test parameters for reference.

PRODUCT OVERVIEW

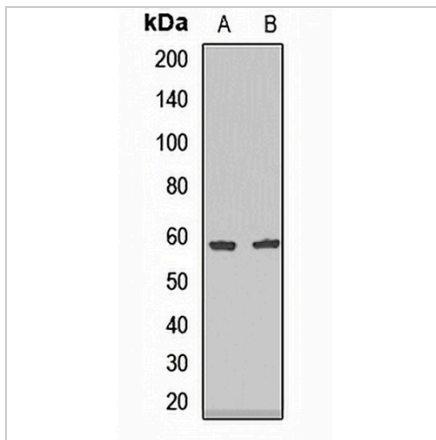
Description	Rabbit polyclonal antibody to Endothelial Lipase
Specificity	Recognizes endogenous levels of Endothelial Lipase protein.
Antibody Type	Primary antibody
Immunogen	Recombinant fusion protein of human Endothelial Lipase
Purification	The antibody was purified by immunogen affinity chromatography.
Molecular Weight	Predicted: 39; Observed: 60 kD
Form/Buffer	Liquid in 0.42% Potassium phosphate, 0.87% Sodium chloride, pH 7.3, 30% glycerol, and 0.01% sodium azide.
Alternative Names	Endothelial lipase; Endothelial cell-derived lipase; EDL; EL
Gene Symbol	LIPG
Entrez Gene	9388(Human); 16891(Mouse); 291437(Rat)
SwissProt	Q9Y5X9(Human); Q9WVG5(Mouse); Q8VBX1(Rat)

*AREX continuously optimizes our products. Webpage content may not reflect the latest updates. For inquiries, please contact info@arexbio.com or your local distributor.

*Clone Number, Reactivity, Source/Host and Clonality can be found in the product name and Key Features section above.

DATASHEET**Endothelial Lipase Rabbit Polyclonal Antibody**

CAT. NO. APA14174

DATA

Western blot analysis of Endothelial Lipase expression in HT29 (A), SW480 (B) whole cell lysates. (Predicted band size: 39; 56 kD; Observed band size: 60 kD)

STORAGE

Store at 4°C short term. For long term storage, store at -20°C, avoiding freeze/thaw cycles.

NOTE

For Research Use Only. Not for diagnostic, therapeutics, prophylactic or in vivo use.