

DATASHEET

TMPase Rabbit Polyclonal Antibody

CAT. NO. APA14179

KEY FEATURES

Target	TMPase	Source / Host	Rabbit
Reactivity	Human, Mouse, Rat	Clonality	Polyclonal
Applications	WB, IHC	Conjugation	Unconjugated
Form / Buffer	Liquid in 0.42% Potassium phosphate, 0.87% Sodium chloride, pH 7.3, 30% glycerol, and 0.01% sodium azide.		Storage at-20°C

BACKGROUND

A non-specific tyrosine phosphatase that dephosphorylates a diverse number of substrates under acidic conditions (pH 4-6) including alkyl, aryl, and acyl orthophosphate monoesters and phosphorylated proteins including alkyl, aryl, and acyl orthophosphate monoesters and phosphorylated proteins . Has lipid phosphatase activity and inactivates lysophosphatidic acid in seminal plasma .

APPLICATION

To ensure optimal assay performance, AREX recommends conducting reagent titration tailored to each testing system for optimal detection results.

WB	1:500 - 1:2000
IHC	1:50 - 1:200

*Results are sample-specific. Please refer to your local assay conditions and test parameters for reference.

PRODUCT OVERVIEW

Description	Rabbit polyclonal antibody to TMPase
Specificity	Recognizes endogenous levels of TMPase protein.
Antibody Type	Primary antibody
Immunogen	Recombinant fusion protein of human TMPase
Purification	The antibody was purified by immunogen affinity chromatography.
Molecular Weight	Predicted: 40; Observed: 48 kD
Form/Buffer	Liquid in 0.42% Potassium phosphate, 0.87% Sodium chloride, pH 7.3, 30% glycerol, and 0.01% sodium azide.
Alternative Names	Prostatic acid phosphatase; PAP; 5'-nucleotidase; 5'-NT; Ecto-5'-nucleotidase; Thiamine monophosphatase; TMPase
Gene Symbol	ACPP
Entrez Gene	55(Human); 56318(Mouse); 56780(Rat)
SwissProt	P15309(Human); Q8CE08(Mouse); P20646(Rat)

*AREX continuously optimizes our products. Webpage content may not reflect the latest updates. For inquiries, please contact info@arex.bio or your local distributor.

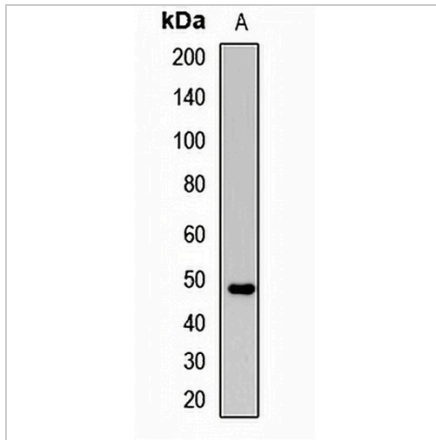
*Clone Number, Reactivity, Source/Host and Clonality can be found in the product name and Key Features section above.

DATASHEET

TMPase Rabbit Polyclonal Antibody

CAT. NO. APA14179

DATA



Western blot analysis of TMPase expression in MCF7 (A) whole cell lysates. (Predicted band size: 40; 44; 48 kD; Observed band size: 48 kD)

Data 2

Immunohistochemical analysis of TMPase staining in human prostate cancer formalin fixed paraffin embedded tissue section. The section was pre-treated using heat mediated antigen retrieval with sodium citrate buffer (pH 6.0). The section was then incubated with the antibody at room temperature and detected using an HRP conjugated compact polymer system. DAB was used as the chromogen. The section was then counterstained with haematoxylin and mounted with DPX.

STORAGE

Store at 4°C short term. For long term storage, store at -20°C, avoiding freeze/thaw cycles.

NOTE

For Research Use Only. Not for diagnostic, therapeutics, prophylactic or in vivo use.