

DATASHEET

PLC beta 1 Rabbit Polyclonal Antibody

CAT. NO. APA14181

KEY FEATURES

Target	PLC beta 1	Source / Host	Rabbit
Reactivity	Human, Mouse, Rat	Clonality	Polyclonal
Applications	WB, IHC	Conjugation	Unconjugated
Form / Buffer	Liquid in 0.42% Potassium phosphate, 0.87% Sodium chloride, pH 7.3, 30% glycerol, and 0.01% sodium azide.		Storage at -20°C

BACKGROUND

Catalyzes the hydrolysis of 1-phosphatidylinositol 4,5-bisphosphate into diacylglycerol (DAG) and inositol 1,4,5-trisphosphate (IP3) and mediates intracellular signaling downstream of G protein-coupled receptors and inositol 1,4,5-trisphosphate (IP3) and mediates intracellular signaling downstream of G protein-coupled receptors . Regulates the function of the endothelial barrier.

APPLICATION

To ensure optimal assay performance, AREX recommends conducting reagent titration tailored to each testing system for optimal detection results.

WB	1:500 - 1:1000
IHC	1:50 - 1:200

*Results are sample-specific. Please refer to your local assay conditions and test parameters for reference.

PRODUCT OVERVIEW

Description	Rabbit polyclonal antibody to PLC beta 1
Specificity	Recognizes endogenous levels of PLC beta 1 protein.
Antibody Type	Primary antibody
Immunogen	Recombinant fusion protein of human PLC beta 1
Purification	The antibody was purified by immunogen affinity chromatography.
Molecular Weight	Predicted: 133; Observed: 139 kD
Form/Buffer	Liquid in 0.42% Potassium phosphate, 0.87% Sodium chloride, pH 7.3, 30% glycerol, and 0.01% sodium azide.
Alternative Names	KIAA0581; 1-phosphatidylinositol 4,5-bisphosphate phosphodiesterase beta-1; PLC-154; Phosphoinositide phospholipase C-beta-1; Phospholipase C-I; PLC-I; Phospholipase C-beta-1; PLC-beta-1
Gene Symbol	PLCB1
Entrez Gene	23236(Human); 18795(Mouse); 24654(Rat)
SwissProt	Q9NQ66(Human); Q9Z1B3(Mouse); P10687(Rat)

*AREX continuously optimizes our products. Webpage content may not reflect the latest updates. For inquiries, please contact info@arexbio.com or your local distributor.

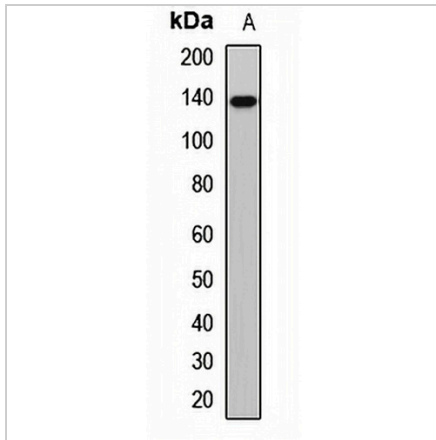
*Clone Number, Reactivity, Source/Host and Clonality can be found in the product name and Key Features section above.

DATASHEET

PLC beta 1 Rabbit Polyclonal Antibody

CAT. NO. APA14181

DATA



Western blot analysis of PLC beta 1 expression in NCIH460 (A) whole cell lysates. (Predicted band size: 133; 138 kD; Observed band size: 139 kD)

Data 2

Immunohistochemical analysis of PLC beta 1 staining in human brain formalin fixed paraffin embedded tissue section. The section was pre-treated using heat mediated antigen retrieval with sodium citrate buffer (pH 6.0). The section was then incubated with the antibody at room temperature and detected using an HRP conjugated compact polymer system. DAB was used as the chromogen. The section was then counterstained with haematoxylin and mounted with DPX.

STORAGE

Store at 4°C short term. For long term storage, store at -20°C, avoiding freeze/thaw cycles.

NOTE

For Research Use Only. Not for diagnostic, therapeutics, prophylactic or in vivo use.