

DATASHEET

EXT2 Rabbit Polyclonal Antibody

CAT. NO. APA14182

KEY FEATURES

Target	EXT2	Source / Host	Rabbit
Reactivity	Human, Mouse	Clonality	Polyclonal
Applications	WB, IF/ICC	Conjugation	Unconjugated
Form / Buffer	Liquid in 0.42% Potassium phosphate, 0.87% Sodium chloride, pH 7.3, 30% glycerol, and 0.01% sodium azide.		Storage at -20°C

BACKGROUND

Glycosyltransferase forming with EXT1 the heterodimeric heparan sulfate polymerase which catalyzes the elongation of the heparan sulfate glycan backbone . Glycan backbone extension consists in the alternating transfer of (1->4)-beta-D-GlcA and (1->4)-alpha-D-GlcNAc residues from their respective UDP-sugar donors. Both EXT1 and EXT2 are required for the full activity of the polymerase since EXT1 bears the N-acetylglucosaminyl-proteoglycan 4-beta-glucuronosyltransferase activity within the complex while EXT2 carries the glucuronosyl-N-acetylglucosaminyl-proteoglycan 4-alpha-N-acetylglucosaminyltransferase activity . Heparan sulfate proteoglycans are ubiquitous components of the extracellular matrix and play an important role in tissue homeostasis and signaling .

APPLICATION

To ensure optimal assay performance, AREX recommends conducting reagent titration tailored to each testing system for optimal detection results.

WB	1:500 - 1:2000
IF/ICC	1:50 - 1:200

*Results are sample-specific. Please refer to your local assay conditions and test parameters for reference.

PRODUCT OVERVIEW

Description	Rabbit polyclonal antibody to EXT2
Specificity	Recognizes endogenous levels of EXT2 protein.
Antibody Type	Primary antibody
Immunogen	Recombinant fusion protein of human EXT2
Purification	The antibody was purified by immunogen affinity chromatography.
Molecular Weight	Predicted: 82; Observed: 82 kD
Form/Buffer	Liquid in 0.42% Potassium phosphate, 0.87% Sodium chloride, pH 7.3, 30% glycerol, and 0.01% sodium azide.
Alternative Names	Exostosin-2; Glucuronosyl-N-acetylglucosaminyl-proteoglycan/N-acetylglucosaminyl-proteoglycan 4-alpha-N-acetylglucosaminyltransferase; Multiple exostoses protein 2; Putative tumor suppressor protein EXT2
Gene Symbol	EXT2
Entrez Gene	2132(Human); 14043(Mouse)
SwissProt	Q93063(Human); P70428(Mouse)

*AREX continuously optimizes our products. Webpage content may not reflect the latest updates. For inquiries, please contact info@arexbio.com or your local distributor.

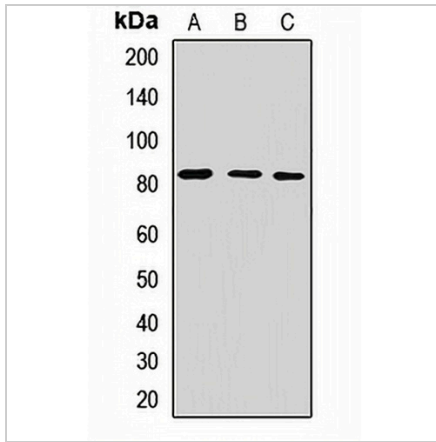
*Clone Number, Reactivity, Source/Host and Clonality can be found in the product name and Key Features section above.

DATASHEET

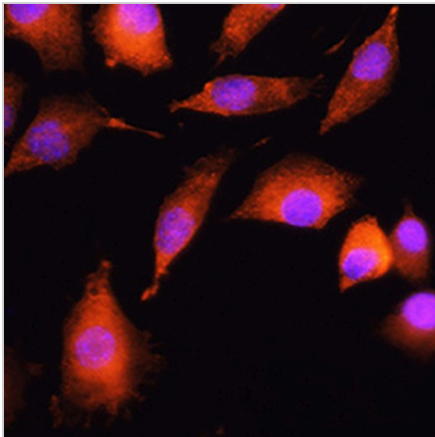
EXT2 Rabbit Polyclonal Antibody

CAT. NO. APA14182

DATA



Western blot analysis of EXT2 expression in HeLa (A), SKOV3 (B), mouse liver (C) whole cell lysates. (Predicted band size: 82; 83; 85 kD; Observed band size: 82 kD)



Immunofluorescent analysis of EXT2 staining in L929 cells. Formalin-fixed cells were permeabilized with 0.1% Triton X-100 in TBS for 5-10 minutes and blocked with 3% BSA-PBS for 30 minutes at room temperature. Cells were probed with the primary antibody in 3% BSA-PBS and incubated overnight at 4 °C in a humidified chamber. Cells were washed with PBST and incubated with a AREX® Fluor 594-conjugated secondary antibody (red) in PBS at room temperature in the dark. DAPI was used to stain the cell nuclei (blue).

STORAGE

Store at 4°C short term. For long term storage, store at -20°C, avoiding freeze/thaw cycles.

NOTE

For Research Use Only. Not for diagnostic, therapeutics, prophylactic or in vivo use.