

DATASHEET

TCEB1 Rabbit Polyclonal Antibody

CAT. NO. APA14185

KEY FEATURES

Target	TCEB1	Source / Host	Rabbit
Reactivity	Human, Mouse, Rat	Clonality	Polyclonal
Applications	WB, IHC	Conjugation	Unconjugated
Form / Buffer	Liquid in 0.42% Potassium phosphate, 0.87% Sodium chloride, pH 7.3, 30% glycerol, and 0.01% sodium azide.		Storage at -20°C

BACKGROUND

SIII, also known as elongin, is a general transcription elongation factor that increases the RNA polymerase II transcription elongation past template-encoded arresting sites. Subunit A is transcriptionally active and its transcription activity is strongly enhanced by binding to the dimeric complex of the SIII regulatory subunits B and C (elongin BC complex). In embryonic stem cells, the elongin BC complex is recruited by EPOF to Polycomb group (PcG) target genes in order generate genomic region that display both active and repressive chromatin properties, an important feature of pluripotent stem cells.

APPLICATION

To ensure optimal assay performance, AREX recommends conducting reagent titration tailored to each testing system for optimal detection results.

WB	1:500 - 1:2000
IHC	1:50 - 1:200

*Results are sample-specific. Please refer to your local assay conditions and test parameters for reference.

PRODUCT OVERVIEW

Description	Rabbit polyclonal antibody to TCEB1
Specificity	Recognizes endogenous levels of TCEB1 protein.
Antibody Type	Primary antibody
Immunogen	Recombinant fusion protein of human TCEB1
Purification	The antibody was purified by immunogen affinity chromatography.
Molecular Weight	Predicted: 10; Observed: 12 kD
Form/Buffer	Liquid in 0.42% Potassium phosphate, 0.87% Sodium chloride, pH 7.3, 30% glycerol, and 0.01% sodium azide.
Alternative Names	Transcription elongation factor B polypeptide 1; Elongin 15 kDa subunit; Elongin-C; EloC; RNA polymerase II transcription factor SIII subunit C; SIII p15
Gene Symbol	TCEB1
Entrez Gene	6921(Human); 102642819; 67923(Mouse); 64525(Rat)
SwissProt	Q15369(Human); P83940(Mouse); P83941(Rat)

*AREX continuously optimizes our products. Webpage content may not reflect the latest updates. For inquiries, please contact info@arexbio.com or your local distributor.

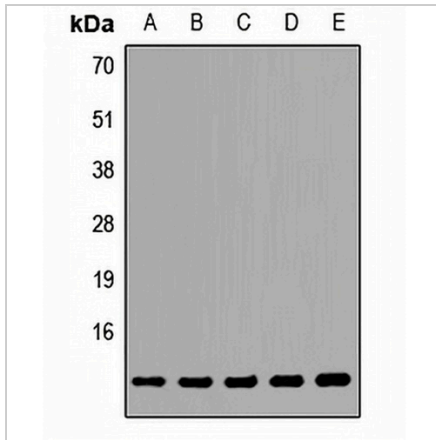
*Clone Number, Reactivity, Source/Host and Clonality can be found in the product name and Key Features section above.

DATASHEET

TCEB1 Rabbit Polyclonal Antibody

CAT. NO. APA14185

DATA



Western blot analysis of TCEB1 expression in Jurkat (A), MCF7 (B), HepG2 (C), mouse lung (D), rat brain (E) whole cell lysates. (Predicted band size: 10; 12 kD; Observed band size: 12 kD)

Data 2

Immunohistochemical analysis of TCEB1 staining in human stomach formalin fixed paraffin embedded tissue section. The section was pre-treated using heat mediated antigen retrieval with sodium citrate buffer (pH 6.0). The section was then incubated with the antibody at room temperature and detected using an HRP conjugated compact polymer system. DAB was used as the chromogen. The section was then counterstained with haematoxylin and mounted with DPX.

STORAGE

Store at 4°C short term. For long term storage, store at -20°C, avoiding freeze/thaw cycles.

NOTE

For Research Use Only. Not for diagnostic, therapeutics, prophylactic or in vivo use.