

## DATASHEET

# PRL3 Rabbit Polyclonal Antibody

CAT. NO. APA14187

### KEY FEATURES

Target	PRL3	Source / Host	Rabbit
Reactivity	Human, Mouse	Clonality	Polyclonal
Applications	WB, IHC	Conjugation	Unconjugated
Form / Buffer	Liquid in 0.42% Potassium phosphate, 0.87% Sodium chloride, pH 7.3, 30% glycerol, and 0.01% sodium azide.		Storage at-20°C

### BACKGROUND

Protein tyrosine phosphatase which stimulates progression from G1 into S phase during mitosis. Enhances cell proliferation, cell motility and invasive activity, and promotes cancer metastasis. May be involved in the progression of cardiac hypertrophy by inhibiting intracellular calcium mobilization in response to angiotensin II.

### APPLICATION

To ensure optimal assay performance, AREX recommends conducting reagent titration tailored to each testing system for optimal detection results.

WB	1:500 - 1:2000
IHC	1:50 - 1:200

\*Results are sample-specific. Please refer to your local assay conditions and test parameters for reference.

### PRODUCT OVERVIEW

Description	Rabbit polyclonal antibody to PRL3
Specificity	Recognizes endogenous levels of PRL3 protein.
Antibody Type	Primary antibody
Immunogen	Recombinant fusion protein of human PRL3
Purification	The antibody was purified by immunogen affinity chromatography.
Molecular Weight	Predicted: 10; Observed: 26 kD
Form/Buffer	Liquid in 0.42% Potassium phosphate, 0.87% Sodium chloride, pH 7.3, 30% glycerol, and 0.01% sodium azide.
Alternative Names	PRL3; Protein tyrosine phosphatase type IVA 3; PRL-R; Protein-tyrosine phosphatase 4a3; Protein-tyrosine phosphatase of regenerating liver 3; PRL-3
Gene Symbol	PTP4A3
Entrez Gene	11156(Human); 19245(Mouse)
SwissProt	O75365(Human); Q9D658(Mouse)

\*AREX continuously optimizes our products. Webpage content may not reflect the latest updates. For inquiries, please contact [info@arexbio.com](mailto:info@arexbio.com) or your local distributor.

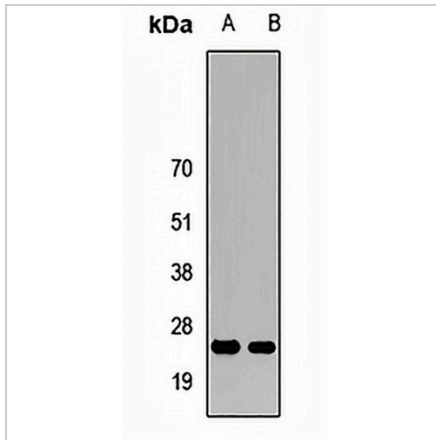
\*Clone Number, Reactivity, Source/Host and Clonality can be found in the product name and Key Features section above.

**DATASHEET**

**PRL3 Rabbit Polyclonal Antibody**

CAT. NO. APA14187

**DATA**



Western blot analysis of PRL3 expression in K562 (A), HEK293T (B) whole cell lysates. (Predicted band size: 10; 16; 19 kD; Observed band size: 26 kD)

Data 2

Immunohistochemical analysis of PRL3 staining in human colon cancer formalin fixed paraffin embedded tissue section. The section was pre-treated using heat mediated antigen retrieval with sodium citrate buffer (pH 6.0). The section was then incubated with the antibody at room temperature and detected using an HRP conjugated compact polymer system. DAB was used as the chromogen. The section was then counterstained with haematoxylin and mounted with DPX.

**STORAGE**

Store at 4°C short term. For long term storage, store at -20°C, avoiding freeze/thaw cycles.

**NOTE**

For Research Use Only. Not for diagnostic, therapeutics, prophylactic or in vivo use.