

DATASHEET

CDC45 Rabbit Polyclonal Antibody

CAT. NO. APA14193

KEY FEATURES

Target	CDC45	Source / Host	Rabbit
Reactivity	Human, Mouse	Clonality	Polyclonal
Applications	WB	Conjugation	Unconjugated
Form / Buffer	Liquid in 0.42% Potassium phosphate, 0.87% Sodium chloride, pH 7.3, 30% glycerol, and 0.01% sodium azide.		Storage at -20°C

BACKGROUND

Required for initiation of chromosomal DNA replication. Core component of CDC45-MCM-GINS (CMG) helicase, the molecular machine that unwinds template DNA during replication, and around which the replisome is built.

APPLICATION

To ensure optimal assay performance, AREX recommends conducting reagent titration tailored to each testing system for optimal detection results.

WB	1:500 - 1:1000
----	----------------

*Results are sample-specific. Please refer to your local assay conditions and test parameters for reference.

PRODUCT OVERVIEW

Description	Rabbit polyclonal antibody to CDC45
Specificity	Recognizes endogenous levels of CDC45 protein.
Antibody Type	Primary antibody
Immunogen	Recombinant fusion protein of human CDC45
Purification	The antibody was purified by immunogen affinity chromatography.
Molecular Weight	Predicted: 60; Observed: 55 kD
Form/Buffer	Liquid in 0.42% Potassium phosphate, 0.87% Sodium chloride, pH 7.3, 30% glycerol, and 0.01% sodium azide.
Alternative Names	CDC45L; CDC45L2; Cell division control protein 45 homolog; PORC-PI-1
Gene Symbol	CDC45
Entrez Gene	8318(Human); 12544(Mouse)
SwissProt	O75419(Human); Q9Z1X9(Mouse)

*AREX continuously optimizes our products. Webpage content may not reflect the latest updates. For inquiries, please contact info@arexbio.com or your local distributor.

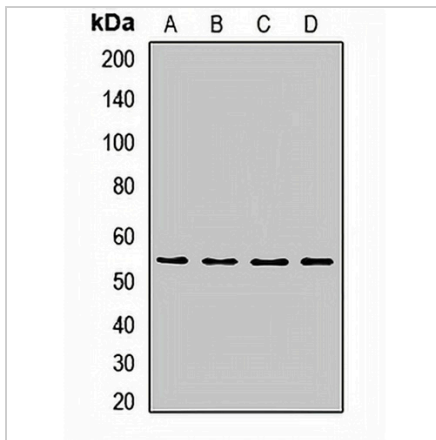
*Clone Number, Reactivity, Source/Host and Clonality can be found in the product name and Key Features section above.

DATASHEET

CDC45 Rabbit Polyclonal Antibody

CAT. NO. APA14193

DATA



Western blot analysis of CDC45 expression in HeLa (A), A549 (B), HT29 (C), mouse thymuse (D) whole cell lysates. (Predicted band size: 60; 65; 68 kD; Observed band size: 55 kD)

STORAGE

Store at 4°C short term. For long term storage, store at -20°C, avoiding freeze/thaw cycles.

NOTE

For Research Use Only. Not for diagnostic, therapeutics, prophylactic or in vivo use.