

DATASHEET

REG3 alpha Rabbit Polyclonal Antibody

CAT. NO. APA14197

KEY FEATURES

Target	REG3 alpha	Source / Host	Rabbit
Reactivity	Human, Mouse, Rat	Clonality	Polyclonal
Applications	WB, IHC, IF/ICC	Conjugation	Unconjugated
Form / Buffer	Liquid in 0.42% Potassium phosphate, 0.87% Sodium chloride, pH 7.3, 30% glycerol, and 0.01% sodium azide.		Storage at-20°C

BACKGROUND

Bactericidal C-type lectin which acts exclusively against Gram-positive bacteria and mediates bacterial killing by binding to surface-exposed carbohydrate moieties of peptidoglycan . Binds membrane phospholipids and kills bacteria by forming a hexameric membrane-permeabilizing oligomeric pore .

APPLICATION

To ensure optimal assay performance, AREX recommends conducting reagent titration tailored to each testing system for optimal detection results.

WB	1:500 - 1:2000
IHC	1:50 - 1:200
IF/ICC	1:50 - 1:200

*Results are sample-specific. Please refer to your local assay conditions and test parameters for reference.

PRODUCT OVERVIEW

Description	Rabbit polyclonal antibody to REG3 alpha
Specificity	Recognizes endogenous levels of REG3 alpha protein.
Antibody Type	Primary antibody
Immunogen	Recombinant fusion protein of human REG3 alpha
Purification	The antibody was purified by immunogen affinity chromatography.
Molecular Weight	Predicted: 19 kD; Observed: 15 kD
Form/Buffer	Liquid in 0.42% Potassium phosphate, 0.87% Sodium chloride, pH 7.3, 30% glycerol, and 0.01% sodium azide.
Alternative Names	HIP; PAP; PAP1; Regenerating islet-derived protein 3-alpha; REG-3-alpha; Hepatointestinal pancreatic protein; HIP/PAP; Human proislet peptide; Pancreatitis-associated protein 1; Regenerating islet-derived protein III-alpha; Reg III-alpha
Gene Symbol	REG3A
Entrez Gene	5068(Human); 19694(Mouse); 171162(Rat)
SwissProt	Q06141(Human); O09037(Mouse); P35231(Rat)

*AREX continuously optimizes our products. Webpage content may not reflect the latest updates. For inquiries, please contact info@arexbio.com or your local distributor.

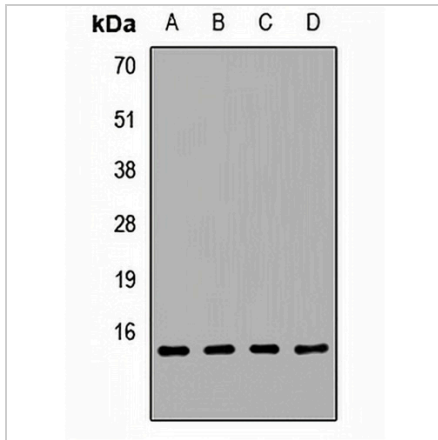
*Clone Number, Reactivity, Source/Host and Clonality can be found in the product name and Key Features section above.

DATASHEET

REG3 alpha Rabbit Polyclonal Antibody

CAT. NO. APA14197

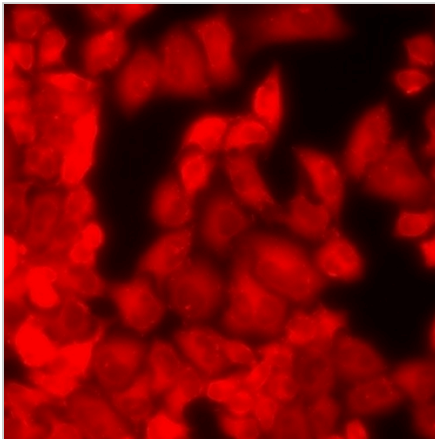
DATA



Western blot analysis of REG3 alpha expression in Raji (A), SW480 (B), mouse brain (C), rat kidney (D) whole cell lysates. (Predicted band size: 19 kD; Observed band size: 15 kD)

Data 2

Immunohistochemical analysis of REG3 alpha staining in human brain formalin fixed paraffin embedded tissue section. The section was pre-treated using heat mediated antigen retrieval with sodium citrate buffer (pH 6.0). The section was then incubated with the antibody at room temperature and detected using an HRP conjugated compact polymer system. DAB was used as the chromogen. The section was then counterstained with haematoxylin and mounted with DPX.



Immunofluorescent analysis of REG3 alpha staining in MCF7 cells. Formalin-fixed cells were permeabilized with 0.1% Triton X-100 in TBS for 5-10 minutes and blocked with 3% BSA-PBS for 30 minutes at room temperature. Cells were probed with the primary antibody in 3% BSA-PBS and incubated overnight at 4 °C in a humidified chamber. Cells were washed with PBST and incubated with a DyLight 594-conjugated secondary antibody (red) in PBS at room temperature in the dark.

STORAGE

Store at 4°C short term. For long term storage, store at -20°C, avoiding freeze/thaw cycles.

NOTE

For Research Use Only. Not for diagnostic, therapeutics, prophylactic or in vivo use.