

DATASHEET

ELSPBP1 Rabbit Polyclonal Antibody

CAT. NO. APA14202

KEY FEATURES

Target	ELSPBP1	Source / Host	Rabbit
Reactivity	Human, Mouse, Rat	Clonality	Polyclonal
Applications	WB	Conjugation	Unconjugated
Form / Buffer	Liquid in 0.42% Potassium phosphate, 0.87% Sodium chloride, pH 7.3, 30% glycerol, and 0.01% sodium azide.		Storage at -20°C

BACKGROUND

Binds to spermatozoa upon ejaculation and may play a role in sperm capacitation. Has phosphorylcholine-binding activity .

APPLICATION

To ensure optimal assay performance, AREX recommends conducting reagent titration tailored to each testing system for optimal detection results.

WB	1:500 - 1:2000
----	----------------

*Results are sample-specific. Please refer to your local assay conditions and test parameters for reference.

PRODUCT OVERVIEW

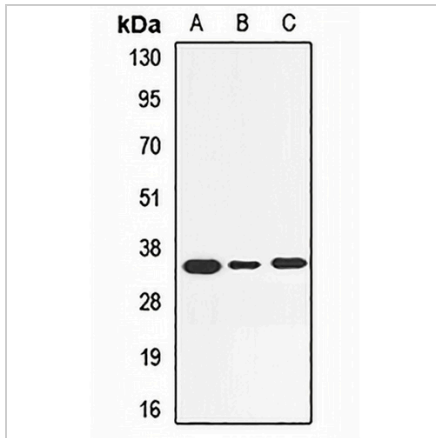
Description	Rabbit polyclonal antibody to ELSPBP1
Specificity	Recognizes endogenous levels of ELSPBP1 protein.
Antibody Type	Primary antibody
Immunogen	Recombinant fusion protein of human ELSPBP1
Purification	The antibody was purified by immunogen affinity chromatography.
Molecular Weight	Predicted: 26 kD; Observed: 34 kD
Form/Buffer	Liquid in 0.42% Potassium phosphate, 0.87% Sodium chloride, pH 7.3, 30% glycerol, and 0.01% sodium azide.
Alternative Names	E12; Epididymal sperm-binding protein 1; Epididymal secretory protein 12; hE12
Gene Symbol	ELSPBP1
Entrez Gene	64100(Human)
SwissProt	Q96BH3(Human)

*AREX continuously optimizes our products. Webpage content may not reflect the latest updates. For inquiries, please contact info@arexbio.com or your local distributor.

*Clone Number, Reactivity, Source/Host and Clonality can be found in the product name and Key Features section above.

DATASHEET**ELSPBP1 Rabbit Polyclonal Antibody**

CAT. NO. APA14202

DATA

Western blot analysis of ELSPBP1 expression in Testis (A), Kidney (B), spleen (C) whole cell lysates. (Predicted band size: 26 kD; Observed band size: 34 kD)

STORAGE

Store at 4°C short term. For long term storage, store at -20°C, avoiding freeze/thaw cycles.

NOTE

For Research Use Only. Not for diagnostic, therapeutics, prophylactic or in vivo use.