

**DATASHEET**

**Speedy A Rabbit Polyclonal Antibody**

CAT. NO. APA14203

**KEY FEATURES**

Target	Speedy A	Source / Host	Rabbit
Reactivity	Human, Mouse, Rat	Clonality	Polyclonal
Applications	WB	Conjugation	Unconjugated
Form / Buffer	Liquid in 0.42% Potassium phosphate, 0.87% Sodium chloride, pH 7.3, 30% glycerol, and 0.01% sodium azide.		Storage at-20°C

**BACKGROUND**

Regulates the G1/S phase transition of the cell cycle by binding and activating CDK1 and CDK2 . Contributes to CDK2 activation without promoting CDK2 phosphorylation, by inducing a conformation change of the CDK2 T-loop that obstructs the substrate-binding cleft prior to kinase activation . Mediates cell survival during the DNA damage process through activation of CDK2 .

**APPLICATION**

To ensure optimal assay performance, AREX recommends conducting reagent titration tailored to each testing system for optimal detection results.

WB	1:500 - 1:1000
----	----------------

\*Results are sample-specific. Please refer to your local assay conditions and test parameters for reference.

**PRODUCT OVERVIEW**

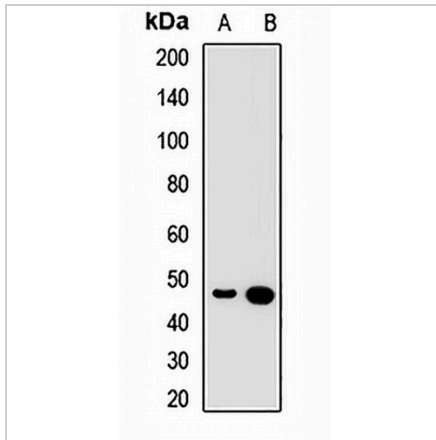
Description	Rabbit polyclonal antibody to Speedy A
Specificity	Recognizes endogenous levels of Speedy A protein.
Antibody Type	Primary antibody
Immunogen	Recombinant fusion protein of human Speedy A
Purification	The antibody was purified by immunogen affinity chromatography.
Molecular Weight	Predicted: 33; Observed: 46 kD
Form/Buffer	Liquid in 0.42% Potassium phosphate, 0.87% Sodium chloride, pH 7.3, 30% glycerol, and 0.01% sodium azide.
Alternative Names	SPDY1; SPY1; Speedy protein A; Rapid inducer of G2/M progression in oocytes A; RINGO A; hSpy/Ringo A; Speedy-1; Spy1
Gene Symbol	SPDYA
Entrez Gene	245711(Human); 70891(Mouse); 192209(Rat)
SwissProt	Q5MJ70(Human); Q5IBH7(Mouse); Q8R496(Rat)

\*AREX continuously optimizes our products. Webpage content may not reflect the latest updates. For inquiries, please contact [info@arexbio.com](mailto:info@arexbio.com) or your local distributor.

\*Clone Number, Reactivity, Source/Host and Clonality can be found in the product name and Key Features section above.

**DATASHEET****Speedy A Rabbit Polyclonal Antibody**

CAT. NO. APA14203

**DATA**

Western blot analysis of Speedy A expression in PC3 (A), U87 (B) whole cell lysates.  
(Predicted band size: 33; 36 kD; Observed band size: 46 kD)

**STORAGE**

Store at 4°C short term. For long term storage, store at -20°C, avoiding freeze/thaw cycles.

**NOTE**

For Research Use Only. Not for diagnostic, therapeutics, prophylactic or in vivo use.