

**DATASHEET**

**CHD3 Rabbit Polyclonal Antibody**

CAT. NO. APA14210

**KEY FEATURES**

|               |   |               |                     |
|---------------|---|---------------|---------------------|
| Target        | CHD3  | Source / Host | Rabbit              |
| Reactivity    | Human, Mouse, Rat   | Clonality     | Polyclonal          |
| Applications  | WB  | Conjugation   | Unconjugated        |
| Form / Buffer | Liquid in 0.42% Potassium phosphate, 0.87% Sodium chloride, pH 7.3, 30% glycerol, and 0.01% sodium azide. |               | Storage<br>at -20°C |

**BACKGROUND**

ATP-dependent chromatin-remodeling factor that binds and distorts nucleosomal DNA . Acts as a component of the histone deacetylase NuRD complex which participates in the remodeling of chromatin . Involved in transcriptional repression as part of the NuRD complex . Required for anchoring centrosomal pericentrin in both interphase and mitosis, for spindle organization and centrosome integrity .

**APPLICATION**

To ensure optimal assay performance, AREX recommends conducting reagent titration tailored to each testing system for optimal detection results.

|    |                |
|----|----------------|
| WB | 1:500 - 1:2000 |
|----|----------------|

\*Results are sample-specific. Please refer to your local assay conditions and test parameters for reference.

**PRODUCT OVERVIEW**

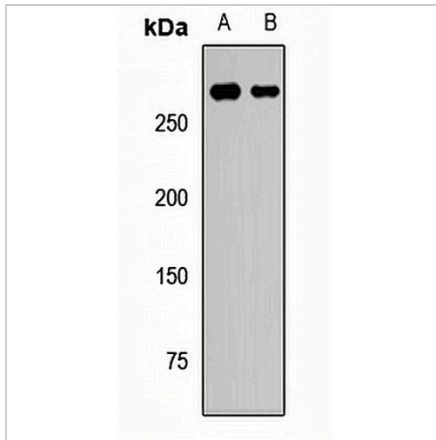
|                   |  |
|-------------------|--|
| Description       | Rabbit polyclonal antibody to CHD3   |
| Specificity       | Recognizes endogenous levels of CHD3 protein.  |
| Antibody Type     | Primary antibody   |
| Immunogen         | KLH-conjugated synthetic peptide of human CHD3   |
| Purification      | The antibody was purified by immunogen affinity chromatography.  |
| Molecular Weight  | Predicted: 222; Observed: 280 kD   |
| Form/Buffer       | Liquid in 0.42% Potassium phosphate, 0.87% Sodium chloride, pH 7.3, 30% glycerol, and 0.01% sodium azide.  |
| Alternative Names | Chromodomain-helicase-DNA-binding protein 3; CHD-3; ATP-dependent helicase CHD3; Mi-2 autoantigen 240 kDa protein; Mi2-alpha; Zinc finger helicase; hZFH |
| Gene Symbol       | CHD3   |
| Entrez Gene       | 1107(Human)  |
| SwissProt         | Q12873(Human)  |

\*AREX continuously optimizes our products. Webpage content may not reflect the latest updates. For inquiries, please contact [info@arexbio.com](mailto:info@arexbio.com) or your local distributor.

\*Clone Number, Reactivity, Source/Host and Clonality can be found in the product name and Key Features section above.

**DATASHEET****CHD3 Rabbit Polyclonal Antibody**

CAT. NO. APA14210

**DATA**

Western blot analysis of CHD3 expression in HepG2 (A), Jurkat (B) whole cell lysates.  
(Predicted band size: 222; 226; 233 kD; Observed band size: 280 kD)

**STORAGE**

Store at 4°C short term. For long term storage, store at -20°C, avoiding freeze/thaw cycles.

**NOTE**

For Research Use Only. Not for diagnostic, therapeutics, prophylactic or in vivo use.