

## DATASHEET

# EGLN2 Rabbit Polyclonal Antibody

CAT. NO. APA14214

### KEY FEATURES

|               |   |               |                     |
|---------------|---|---------------|---------------------|
| Target        | EGLN2   | Source / Host | Rabbit              |
| Reactivity    | Human, Mouse, Rat   | Clonality     | Polyclonal          |
| Applications  | WB  | Conjugation   | Unconjugated        |
| Form / Buffer | Liquid in 0.42% Potassium phosphate, 0.87% Sodium chloride, pH 7.3, 30% glycerol, and 0.01% sodium azide. |               | Storage<br>at -20°C |

### BACKGROUND

Prolyl hydroxylase that mediates hydroxylation of proline residues in target proteins, such as ATF4, IKBKB, CEP192 and HIF1A . Target proteins are preferentially recognized via a LXXLAP motif . Cellular oxygen sensor that catalyzes, under normoxic conditions, the post-translational formation of 4-hydroxyproline in hypoxia-inducible factor (HIF) alpha proteins . Hydroxylates a specific proline found in each of the oxygen-dependent degradation (ODD) domains (N-terminal, NODD, and C-terminal, CODD) of HIF1A . Also hydroxylates HIF2A . Has a preference for the CODD site for both HIF1A and HIF2A . Hydroxylated HIFs are then targeted for proteasomal degradation via the von Hippel-Lindau ubiquitination complex .

### APPLICATION

To ensure optimal assay performance, AREX recommends conducting reagent titration tailored to each testing system for optimal detection results.

|    |                |
|----|----------------|
| WB | 1:500 - 1:2000 |
|----|----------------|

\*Results are sample-specific. Please refer to your local assay conditions and test parameters for reference.

### PRODUCT OVERVIEW

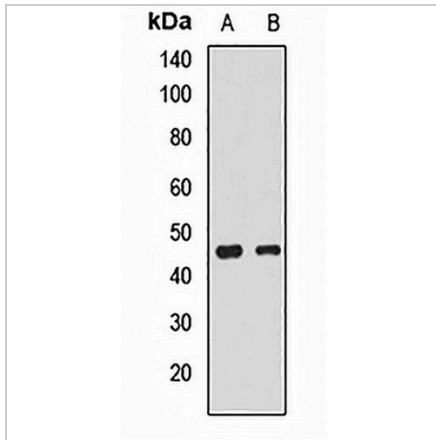
|                   |  |
|-------------------|--|
| Description       | Rabbit polyclonal antibody to EGLN2  |
| Specificity       | Recognizes endogenous levels of EGLN2 protein.   |
| Antibody Type     | Primary antibody   |
| Immunogen         | KLH-conjugated synthetic peptide of human EGLN2  |
| Purification      | The antibody was purified by immunogen affinity chromatography.  |
| Molecular Weight  | Predicted: 40; Observed: 43 kD   |
| Form/Buffer       | Liquid in 0.42% Potassium phosphate, 0.87% Sodium chloride, pH 7.3, 30% glycerol, and 0.01% sodium azide.  |
| Alternative Names | EIT6; Egl nine homolog 2; Estrogen-induced tag 6; HPH-3; Hypoxia-inducible factor prolyl hydroxylase 1; HIF-PH1; HIF-prolyl hydroxylase 1; HPH-1; Prolyl hydroxylase domain-containing protein 1; PHD1 |
| Gene Symbol       | EGLN2  |
| Entrez Gene       | 112398(Human); 112406(Mouse); 308457(Rat)  |
| SwissProt         | Q96K50(Human); Q91YE2(Mouse); Q6AYU4(Rat)  |

\*AREX continuously optimizes our products. Webpage content may not reflect the latest updates. For inquiries, please contact [info@arexbio.com](mailto:info@arexbio.com) or your local distributor.

\*Clone Number, Reactivity, Source/Host and Clonality can be found in the product name and Key Features section above.

**DATASHEET****EGLN2 Rabbit Polyclonal Antibody**

CAT. NO. APA14214

**DATA**

Western blot analysis of EGLN2 expression in SKOV3 (A), mouse brain (B) whole cell lysates. (Predicted band size: 40; 43 kD; Observed band size: 43 kD)

**STORAGE**

Store at 4°C short term. For long term storage, store at -20°C, avoiding freeze/thaw cycles.

**NOTE**

For Research Use Only. Not for diagnostic, therapeutics, prophylactic or in vivo use.