

**DATASHEET**

**ALKBH7 Rabbit Polyclonal Antibody**

CAT. NO. APA14218

**KEY FEATURES**

Target	ALKBH7	Source / Host	Rabbit
Reactivity	Human, Mouse	Clonality	Polyclonal
Applications	WB	Conjugation	Unconjugated
Form / Buffer	Liquid in 0.42% Potassium phosphate, 0.87% Sodium chloride, pH 7.3, 30% glycerol, and 0.01% sodium azide.		Storage at -20°C

**BACKGROUND**

RNA demethylase that demethylates N(2)-dimethylguanosine and N(1)-methyladenosine within mitochondrial pre-tRNA regions. This demethylation activity plays a crucial role in regulating the processing of nascent polycistronic mitochondrial RNA, thereby influencing mitochondrial gene expression and overall mitochondrial activity -dimethylguanosine and N(1)-methyladenosine within mitochondrial pre-tRNA regions. This demethylation activity plays a crucial role in regulating the processing of nascent polycistronic mitochondrial RNA, thereby influencing mitochondrial gene expression and overall mitochondrial activity . In response to extensive DNA damage is required for programmed necrosis induced by alkylation and oxidation.

**APPLICATION**

To ensure optimal assay performance, AREX recommends conducting reagent titration tailored to each testing system for optimal detection results.

WB	1:500 - 1:2000
----	----------------

\*Results are sample-specific. Please refer to your local assay conditions and test parameters for reference.

**PRODUCT OVERVIEW**

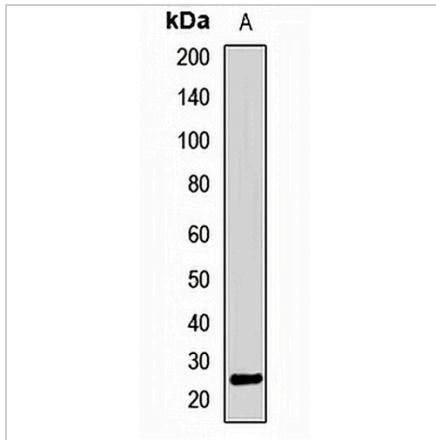
Description	Rabbit polyclonal antibody to ALKBH7
Specificity	Recognizes endogenous levels of ALKBH7 protein.
Antibody Type	Primary antibody
Immunogen	Recombinant fusion protein of human ALKBH7
Purification	The antibody was purified by immunogen affinity chromatography.
Molecular Weight	Predicted: 24 kD; Observed: 26 kD
Form/Buffer	Liquid in 0.42% Potassium phosphate, 0.87% Sodium chloride, pH 7.3, 30% glycerol, and 0.01% sodium azide.
Alternative Names	ABH7; SPATA11; Alpha-ketoglutarate-dependent dioxygenase alkB homolog 7 mitochondrial; Alkylated DNA repair protein alkB homolog 7; Spermatogenesis cell proliferation-related protein; Spermatogenesis-associated protein 11
Gene Symbol	ALKBH7
Entrez Gene	84266(Human); 66400(Mouse)
SwissProt	Q9BT30(Human); Q9D6Z0(Mouse)

\*AREX continuously optimizes our products. Webpage content may not reflect the latest updates. For inquiries, please contact [info@arexbio.com](mailto:info@arexbio.com) or your local distributor.

\*Clone Number, Reactivity, Source/Host and Clonality can be found in the product name and Key Features section above.

**DATASHEET****ALKBH7 Rabbit Polyclonal Antibody**

CAT. NO. APA14218

**DATA**

Western blot analysis of ALKBH7 expression in mouse eye (A) whole cell lysates.  
(Predicted band size: 24 kD; Observed band size: 26 kD)

**STORAGE**

Store at 4°C short term. For long term storage, store at -20°C, avoiding freeze/thaw cycles.

**NOTE**

For Research Use Only. Not for diagnostic, therapeutics, prophylactic or in vivo use.