

DATASHEET

POLR2L Rabbit Polyclonal Antibody

CAT. NO. APA14221

KEY FEATURES

Target	POLR2L	Source / Host	Rabbit
Reactivity	Human, Mouse	Clonality	Polyclonal
Applications	WB	Conjugation	Unconjugated
Form / Buffer	Liquid in 0.42% Potassium phosphate, 0.87% Sodium chloride, pH 7.3, 30% glycerol, and 0.01% sodium azide.		Storage at -20°C

BACKGROUND

DNA-dependent RNA polymerase catalyzes the transcription of DNA into RNA using the four ribonucleoside triphosphates as substrates. Common component of RNA polymerases I, II and III which synthesize ribosomal RNA precursors, mRNA precursors and many functional non-coding RNAs, and a small RNAs, such as 5S rRNA and tRNAs, respectively.

APPLICATION

To ensure optimal assay performance, AREX recommends conducting reagent titration tailored to each testing system for optimal detection results.

WB	1:500 - 1:2000
----	----------------

*Results are sample-specific. Please refer to your local assay conditions and test parameters for reference.

PRODUCT OVERVIEW

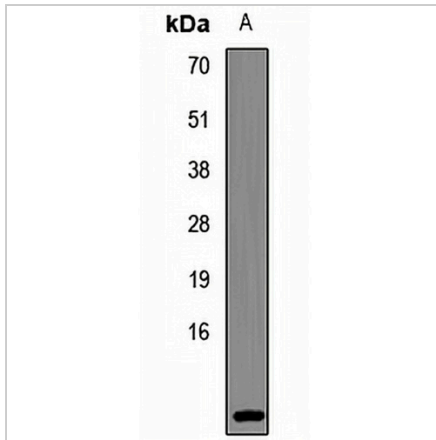
Description	Rabbit polyclonal antibody to POLR2L
Specificity	Recognizes endogenous levels of POLR2L protein.
Antibody Type	Primary antibody
Immunogen	Recombinant fusion protein of human POLR2L
Purification	The antibody was purified by immunogen affinity chromatography.
Molecular Weight	Predicted: 7 kD; Observed: 7 kD
Form/Buffer	Liquid in 0.42% Potassium phosphate, 0.87% Sodium chloride, pH 7.3, 30% glycerol, and 0.01% sodium azide.
Alternative Names	DNA-directed RNA polymerases I, II, and III subunit RPABC5; RNA polymerases I, II, and III subunit ABC5; DNA-directed RNA polymerase III subunit L; RNA polymerase II 7.6 kDa subunit; RPB7.6; RPB10 homolog
Gene Symbol	POLR2L
Entrez Gene	5441(Human); 66491(Mouse)
SwissProt	P62875(Human); P62876(Mouse)

*AREX continuously optimizes our products. Webpage content may not reflect the latest updates. For inquiries, please contact info@arexbio.com or your local distributor.

*Clone Number, Reactivity, Source/Host and Clonality can be found in the product name and Key Features section above.

DATASHEET**POLR2L Rabbit Polyclonal Antibody**

CAT. NO. APA14221

DATA

Western blot analysis of POLR2L expression in Raji (A) whole cell lysates. (Predicted band size: 7 kD; Observed band size: 7 kD)

STORAGE

Store at 4°C short term. For long term storage, store at -20°C, avoiding freeze/thaw cycles.

NOTE

For Research Use Only. Not for diagnostic, therapeutics, prophylactic or in vivo use.