

**DATASHEET**

**IRF2 Rabbit Polyclonal Antibody**

CAT. NO. APA14228

**KEY FEATURES**

Target	IRF2	Source / Host	Rabbit
Reactivity	Human, Mouse, Rat	Clonality	Polyclonal
Applications	WB, IHC, IF/ICC	Conjugation	Unconjugated
Form / Buffer	Liquid in 0.42% Potassium phosphate, 0.87% Sodium chloride, pH 7.3, 30% glycerol, and 0.01% sodium azide.		Storage at -20°C

**BACKGROUND**

DNA-binding transcription factor that specifically binds to the upstream regulatory region of type I interferon (IFN) and IFN-inducible genes and regulates their expression and IFN-inducible genes and regulates their expression . Mainly acts as a transcription repressor, repressing expression . Also acts as an activator for several genes including H4 and IL7 . Constitutively binds to the ISRE promoter to activate IL7 . Involved in cell cycle regulation through binding the site II (HiNF-M) promoter region of H4 and activating transcription during cell growth . Antagonizes IRF1 transcriptional activation .

**APPLICATION**

To ensure optimal assay performance, AREX recommends conducting reagent titration tailored to each testing system for optimal detection results.

WB	1:500 - 1:2000
IHC	1:50 - 1:200
IF/ICC	1:50 - 1:200

\*Results are sample-specific. Please refer to your local assay conditions and test parameters for reference.

**PRODUCT OVERVIEW**

Description	Rabbit polyclonal antibody to IRF2
Specificity	Recognizes endogenous levels of IRF2 protein.
Antibody Type	Primary antibody
Immunogen	Recombinant fusion protein of human IRF2
Purification	The antibody was purified by immunogen affinity chromatography.
Molecular Weight	Predicted: 39 kD; Observed: 40 kD
Form/Buffer	Liquid in 0.42% Potassium phosphate, 0.87% Sodium chloride, pH 7.3, 30% glycerol, and 0.01% sodium azide.
Alternative Names	Interferon regulatory factor 2; IRF-2
Gene Symbol	IRF2
Entrez Gene	3660(Human); 16363(Mouse)
SwissProt	P14316(Human); P23906(Mouse)

\*AREX continuously optimizes our products. Webpage content may not reflect the latest updates. For inquiries, please contact [info@arexbio.com](mailto:info@arexbio.com) or your local distributor.

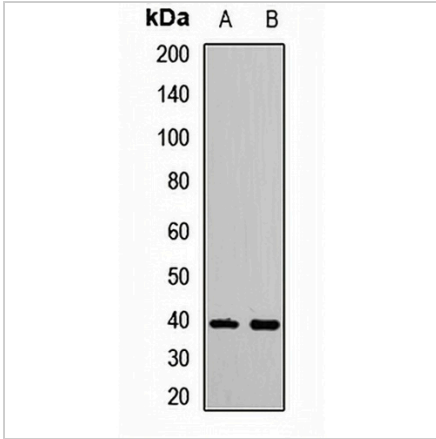
\*Clone Number, Reactivity, Source/Host and Clonality can be found in the product name and Key Features section above.

**DATASHEET**

**IRF2 Rabbit Polyclonal Antibody**

CAT. NO. APA14228

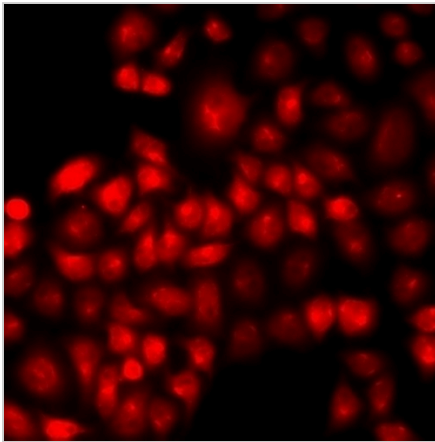
**DATA**



Western blot analysis of IRF2 expression in SW480 (A), NIH3T3 (B) whole cell lysates. (Predicted band size: 39 kD; Observed band size: 40 kD)

Data 2

Immunohistochemical analysis of IRF2 staining in human brain formalin fixed paraffin embedded tissue section. The section was pre-treated using heat mediated antigen retrieval with sodium citrate buffer (pH 6.0). The section was then incubated with the antibody at room temperature and detected using an HRP conjugated compact polymer system. DAB was used as the chromogen. The section was then counterstained with haematoxylin and mounted with DPX.



Immunofluorescent analysis of IRF2 staining in HeLa cells. Formalin-fixed cells were permeabilized with 0.1% Triton X-100 in TBS for 5-10 minutes and blocked with 3% BSA-PBS for 30 minutes at room temperature. Cells were probed with the primary antibody in 3% BSA-PBS and incubated overnight at 4 °C in a humidified chamber. Cells were washed with PBST and incubated with a DyLight 594-conjugated secondary antibody (red) in PBS at room temperature in the dark.

**STORAGE**

Store at 4°C short term. For long term storage, store at -20°C, avoiding freeze/thaw cycles.

**NOTE**

For Research Use Only. Not for diagnostic, therapeutics, prophylactic or in vivo use.