

DATASHEET

ATG4A Rabbit Polyclonal Antibody

CAT. NO. APA14232

KEY FEATURES

Target	ATG4A	Source / Host	Rabbit
Reactivity	Human, Mouse, Rat	Clonality	Polyclonal
Applications	WB, IF/ICC	Conjugation	Unconjugated
Form / Buffer	Liquid in 0.42% Potassium phosphate, 0.87% Sodium chloride, pH 7.3, 30% glycerol, and 0.01% sodium azide.		Storage at-20°C

BACKGROUND

Cysteine protease that plays a key role in autophagy by mediating both proteolytic activation and delipidation of ATG8 family proteins . The protease activity is required for proteolytic activation of ATG8 family proteins: cleaves the C-terminal amino acid of ATG8 proteins to reveal a C-terminal glycine . Exposure of the glycine at the C-terminus is essential for ATG8 proteins conjugation to phosphatidylethanolamine (PE) and insertion to membranes, which is necessary for autophagy . Preferred substrate is GABARAPL2 followed by MAP1LC3A and GABARAP . Protease activity is also required to counteract formation of high-molecular weight conjugates of ATG8 proteins (ATG8ylation); acts as a deubiquitinating-like enzyme that removes ATG8 conjugated to other proteins, such as ATG3 .

APPLICATION

To ensure optimal assay performance, AREX recommends conducting reagent titration tailored to each testing system for optimal detection results.

WB	1:500 - 1:1000
IF/ICC	1:50 - 1:200

*Results are sample-specific. Please refer to your local assay conditions and test parameters for reference.

PRODUCT OVERVIEW

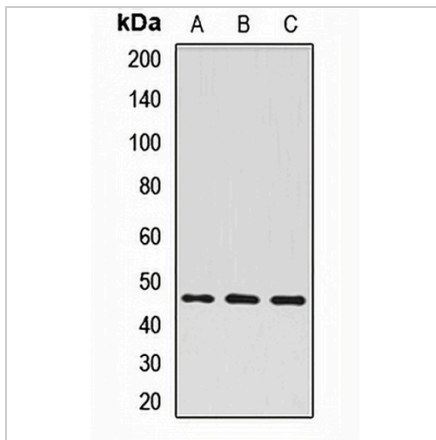
Description	Rabbit polyclonal antibody to ATG4A
Specificity	Recognizes endogenous levels of ATG4A protein.
Antibody Type	Primary antibody
Immunogen	Recombinant fusion protein of human ATG4A
Purification	The antibody was purified by immunogen affinity chromatography.
Molecular Weight	Predicted: 36; Observed: 48 kD
Form/Buffer	Liquid in 0.42% Potassium phosphate, 0.87% Sodium chloride, pH 7.3, 30% glycerol, and 0.01% sodium azide.
Alternative Names	APG4A; AUTL2; Cysteine protease ATG4A; AUT-like 2 cysteine endopeptidase; Autophagin-2; Autophagy-related cysteine endopeptidase 2; Autophagy-related protein 4 homolog A; hAPG4A
Gene Symbol	ATG4A
Entrez Gene	115201(Human); 666468(Mouse)
SwissProt	Q8WYN0(Human); Q8C9S8(Mouse)

*AREX continuously optimizes our products. Webpage content may not reflect the latest updates. For inquiries, please contact info@arexbio.com or your local distributor.

*Clone Number, Reactivity, Source/Host and Clonality can be found in the product name and Key Features section above.

DATASHEET**ATG4A Rabbit Polyclonal Antibody**

CAT. NO. APA14232

DATA

Western blot analysis of ATG4A expression in HepG2 (A), Jurkat (B), mouse skeletal muscle (C) whole cell lysates. (Predicted band size: 36; 38; 42; 45 kD; Observed band size: 48 kD)

STORAGE

Store at 4°C short term. For long term storage, store at -20°C, avoiding freeze/thaw cycles.

NOTE

For Research Use Only. Not for diagnostic, therapeutics, prophylactic or in vivo use.