

DATASHEET

Occludin Rabbit Polyclonal Antibody

CAT. NO. APA14233

KEY FEATURES

Target	Occludin	Source / Host	Rabbit
Reactivity	Human, Mouse, Rat	Clonality	Polyclonal
Applications	WB	Conjugation	Unconjugated
Form / Buffer	Liquid in 0.42% Potassium phosphate, 0.87% Sodium chloride, pH 7.3, 30% glycerol, and 0.01% sodium azide.	Storage	at-20°C

BACKGROUND

May play a role in the formation and regulation of the tight junction (TJ) paracellular permeability barrier. It is able to induce adhesion when expressed in cells lacking tight junctions.

APPLICATION

To ensure optimal assay performance, AREX recommends conducting reagent titration tailored to each testing system for optimal detection results.

WB	1:500 - 1:1000
----	----------------

*Results are sample-specific. Please refer to your local assay conditions and test parameters for reference.

PRODUCT OVERVIEW

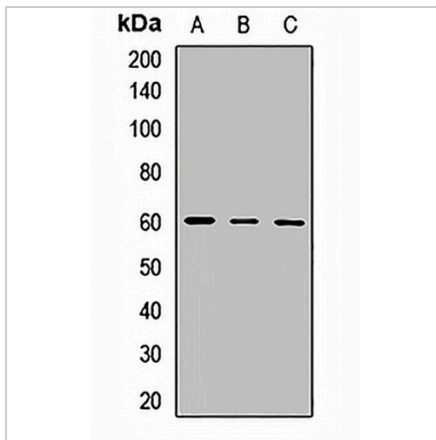
Description	Rabbit polyclonal antibody to Occludin
Specificity	Recognizes endogenous levels of Occludin protein.
Antibody Type	Primary antibody
Immunogen	Recombinant fusion protein of human Occludin
Purification	The antibody was purified by immunogen affinity chromatography.
Molecular Weight	Predicted: 8; Observed: 60 kD
Form/Buffer	Liquid in 0.42% Potassium phosphate, 0.87% Sodium chloride, pH 7.3, 30% glycerol, and 0.01% sodium azide.
Alternative Names	Occludin
Gene Symbol	OCLN
Entrez Gene	100506658(Human); 18260(Mouse); 83497(Rat)
SwissProt	Q16625(Human); Q61146(Mouse); Q6P6T5(Rat)

*AREX continuously optimizes our products. Webpage content may not reflect the latest updates. For inquiries, please contact info@arexbio.com or your local distributor.

*Clone Number, Reactivity, Source/Host and Clonality can be found in the product name and Key Features section above.

DATASHEET**Occludin Rabbit Polyclonal Antibody**

CAT. NO. APA14233

DATA

Western blot analysis of Occludin expression in HEK293T (A), mouse brain (B), rat liver (C) whole cell lysates. (Predicted band size: 8; 23; 31; 52; 54; 59 kD; Observed band size: 60 kD)

STORAGE

Store at 4°C short term. For long term storage, store at -20°C, avoiding freeze/thaw cycles.

NOTE

For Research Use Only. Not for diagnostic, therapeutics, prophylactic or in vivo use.