

DATASHEET

EB1 Rabbit Polyclonal Antibody

CAT. NO. APA14236

KEY FEATURES

Target	EB1	Source / Host	Rabbit
Reactivity	Human, Mouse, Rat	Clonality	Polyclonal
Applications	WB, IF/ICC	Conjugation	Unconjugated
Form / Buffer	Liquid in 0.42% Potassium phosphate, 0.87% Sodium chloride, pH 7.3, 30% glycerol, and 0.01% sodium azide.		Storage at -20°C

BACKGROUND

Plus-end tracking protein (+TIP) that binds to the plus-end of microtubules and regulates the dynamics of the microtubule cytoskeleton that binds to the plus-end of microtubules and regulates the dynamics of the microtubule cytoskeleton . Recruits other +TIP proteins to microtubules by binding to a conserved Ser-X-Leu-Pro (SXLP) motif in their polypeptide chains . Promotes cytoplasmic microtubule nucleation and elongation . Involved in mitotic spindle positioning by stabilizing microtubules and promoting dynamic connection between astral microtubules and the cortex during mitotic chromosome segregation . Assists chromosome alignment in metaphase by recruiting the SKA complex to the spindle and stabilizing its interactions with microtubule bundles (K-fibers) .

APPLICATION

To ensure optimal assay performance, AREX recommends conducting reagent titration tailored to each testing system for optimal detection results.

WB	1:500 - 1:1000
IF/ICC	1:50 - 1:200

*Results are sample-specific. Please refer to your local assay conditions and test parameters for reference.

PRODUCT OVERVIEW

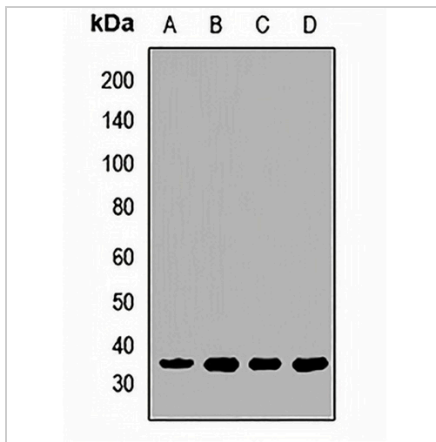
Description	Rabbit polyclonal antibody to EB1
Specificity	Recognizes endogenous levels of EB1 protein.
Antibody Type	Primary antibody
Immunogen	Recombinant fusion protein of human EB1
Purification	The antibody was purified by immunogen affinity chromatography.
Molecular Weight	Predicted: 29 kD; Observed: 34 kD
Form/Buffer	Liquid in 0.42% Potassium phosphate, 0.87% Sodium chloride, pH 7.3, 30% glycerol, and 0.01% sodium azide.
Alternative Names	Microtubule-associated protein RP/EB family member 1; APC-binding protein EB1; End-binding protein 1; EB1
Gene Symbol	MAPRE1
Entrez Gene	22919(Human); 13589(Mouse); 114764(Rat)
SwissProt	Q15691(Human); Q61166(Mouse); Q66HR2(Rat)

*AREX continuously optimizes our products. Webpage content may not reflect the latest updates. For inquiries, please contact info@arexbio.com or your local distributor.

*Clone Number, Reactivity, Source/Host and Clonality can be found in the product name and Key Features section above.

DATASHEET**EB1 Rabbit Polyclonal Antibody**

CAT. NO. APA14236

DATA

Western blot analysis of EB1 expression in HT29 (A), NIH3T3 (B), mouse lung (C), rat heart (D) whole cell lysates. (Predicted band size: 29 kD; Observed band size: 34 kD)

STORAGE

Store at 4°C short term. For long term storage, store at -20°C, avoiding freeze/thaw cycles.

NOTE

For Research Use Only. Not for diagnostic, therapeutics, prophylactic or in vivo use.