

DATASHEET

HSF2 Rabbit Polyclonal Antibody

CAT. NO. APA14240

KEY FEATURES

Target	HSF2	Source / Host	Rabbit
Reactivity	Human, Mouse, Rat	Clonality	Polyclonal
Applications	WB	Conjugation	Unconjugated
Form / Buffer	Liquid in 0.42% Potassium phosphate, 0.87% Sodium chloride, pH 7.3, 30% glycerol, and 0.01% sodium azide.		Storage at -20°C

BACKGROUND

DNA-binding protein that specifically binds heat shock promoter elements (HSE) and activates transcription. In higher eukaryotes, HSF is unable to bind to the HSE unless the cells are heat shocked.

APPLICATION

To ensure optimal assay performance, AREX recommends conducting reagent titration tailored to each testing system for optimal detection results.

WB	1:500 - 1:1000
----	----------------

*Results are sample-specific. Please refer to your local assay conditions and test parameters for reference.

PRODUCT OVERVIEW

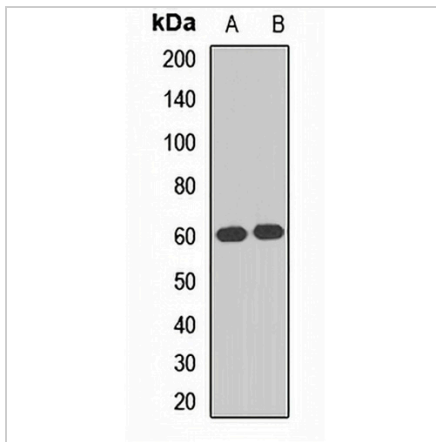
Description	Rabbit polyclonal antibody to HSF2
Specificity	Recognizes endogenous levels of HSF2 protein.
Antibody Type	Primary antibody
Immunogen	Recombinant fusion protein of human HSF2
Purification	The antibody was purified by immunogen affinity chromatography.
Molecular Weight	Predicted: 58; Observed: 60 kD
Form/Buffer	Liquid in 0.42% Potassium phosphate, 0.87% Sodium chloride, pH 7.3, 30% glycerol, and 0.01% sodium azide.
Alternative Names	HSTF2; Heat shock factor protein 2; HSF 2; Heat shock transcription factor 2; HSTF 2
Gene Symbol	HSF2
Entrez Gene	3298(Human); 15500(Mouse)
SwissProt	Q03933(Human); P38533(Mouse)

*AREX continuously optimizes our products. Webpage content may not reflect the latest updates. For inquiries, please contact info@arexbio.com or your local distributor.

*Clone Number, Reactivity, Source/Host and Clonality can be found in the product name and Key Features section above.

DATASHEET**HSF2 Rabbit Polyclonal Antibody**

CAT. NO. APA14240

DATA

Western blot analysis of HSF2 expression in HepG2 (A), SW620 (B) whole cell lysates. (Predicted band size: 58; 60 kD; Observed band size: 60 kD)

STORAGE

Store at 4°C short term. For long term storage, store at -20°C, avoiding freeze/thaw cycles.

NOTE

For Research Use Only. Not for diagnostic, therapeutics, prophylactic or in vivo use.