

DATASHEET

GPT Rabbit Polyclonal Antibody

CAT. NO. APA14245

KEY FEATURES

Target	GPT	Source / Host	Rabbit
Reactivity	Human, Mouse, Rat	Clonality	Polyclonal
Applications	WB, IHC	Conjugation	Unconjugated
Form / Buffer	Liquid in 0.42% Potassium phosphate, 0.87% Sodium chloride, pH 7.3, 30% glycerol, and 0.01% sodium azide.		Storage at -20°C

BACKGROUND

Catalyzes the reversible transamination between alanine and 2-oxoglutarate to form pyruvate and glutamate. Participates in cellular nitrogen metabolism and also in liver gluconeogenesis starting with precursors transported from skeletal muscles .

APPLICATION

To ensure optimal assay performance, AREX recommends conducting reagent titration tailored to each testing system for optimal detection results.

WB	1:500 - 1:2000
IHC	1:50 - 1:200

*Results are sample-specific. Please refer to your local assay conditions and test parameters for reference.

PRODUCT OVERVIEW

Description	Rabbit polyclonal antibody to GPT
Specificity	Recognizes endogenous levels of GPT protein.
Antibody Type	Primary antibody
Immunogen	Recombinant fusion protein of human GPT
Purification	The antibody was purified by immunogen affinity chromatography.
Molecular Weight	Predicted: 54 kD; Observed: 55 kD
Form/Buffer	Liquid in 0.42% Potassium phosphate, 0.87% Sodium chloride, pH 7.3, 30% glycerol, and 0.01% sodium azide.
Alternative Names	AAT1; GPT1; Alanine aminotransferase 1; ALT1; Glutamate pyruvate transaminase 1; GPT 1; Glutamic--alanine transaminase 1; Glutamic--pyruvic transaminase 1
Gene Symbol	GPT
Entrez Gene	2875(Human); 76282(Mouse); 81670(Rat)
SwissProt	P24298(Human); Q8QZR5(Mouse); P25409(Rat)

*AREX continuously optimizes our products. Webpage content may not reflect the latest updates. For inquiries, please contact info@arexbio.com or your local distributor.

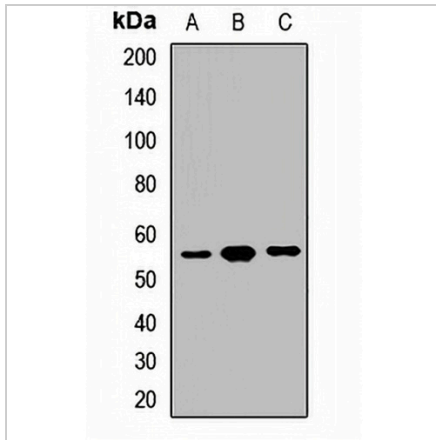
*Clone Number, Reactivity, Source/Host and Clonality can be found in the product name and Key Features section above.

DATASHEET

GPT Rabbit Polyclonal Antibody

CAT. NO. APA14245

DATA



Western blot analysis of GPT expression in mouse lung (A), rat liver (B), rat heart (C) whole cell lysates. (Predicted band size: 54 kD; Observed band size: 55 kD)

Data 2

Immunohistochemical analysis of GPT staining in human liver cancer formalin fixed paraffin embedded tissue section. The section was pre-treated using heat mediated antigen retrieval with sodium citrate buffer (pH 6.0). The section was then incubated with the antibody at room temperature and detected using an HRP conjugated compact polymer system. DAB was used as the chromogen. The section was then counterstained with haematoxylin and mounted with DPX.

STORAGE

Store at 4°C short term. For long term storage, store at -20°C, avoiding freeze/thaw cycles.

NOTE

For Research Use Only. Not for diagnostic, therapeutics, prophylactic or in vivo use.