

DATASHEET

LAT1 Rabbit Polyclonal Antibody

CAT. NO. APA14246

KEY FEATURES

Target	LAT1	Source / Host	Rabbit
Reactivity	Human, Mouse, Rat	Clonality	Polyclonal
Applications	WB	Conjugation	Unconjugated
Form / Buffer	Liquid in 0.42% Potassium phosphate, 0.87% Sodium chloride, pH 7.3, 30% glycerol, and 0.01% sodium azide.		Storage at -20°C

BACKGROUND

The heterodimer with SLC3A2 functions as a sodium-independent, high-affinity transporter that mediates uptake of large neutral amino acids such as phenylalanine, tyrosine, leucine, histidine, methionine, tryptophan, valine, isoleucine and alanine . The heterodimer with SLC3A2 mediates the uptake of L-DOPA . Functions as an amino acid exchanger . May play a role in the transport of L-DOPA across the blood-brain barrier . May act as the major transporter of tyrosine in fibroblasts (Probable). May mediate blood-to-retina L-leucine transport across the inner blood-retinal barrier . Can mediate the transport of thyroid hormones diiodothyronine (T2), triiodothyronine (T3) and thyroxine (T4) across the cell membrane .

APPLICATION

To ensure optimal assay performance, AREX recommends conducting reagent titration tailored to each testing system for optimal detection results.

WB	1:500 - 1:2000
----	----------------

*Results are sample-specific. Please refer to your local assay conditions and test parameters for reference.

PRODUCT OVERVIEW

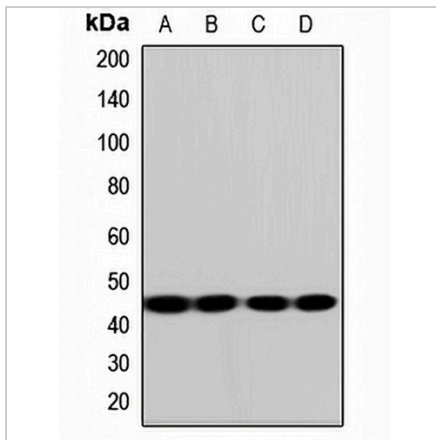
Description	Rabbit polyclonal antibody to LAT1
Specificity	Recognizes endogenous levels of LAT1 protein.
Antibody Type	Primary antibody
Immunogen	Recombinant fusion protein of human LAT1
Purification	The antibody was purified by immunogen affinity chromatography.
Molecular Weight	Predicted: 55 kD; Observed: 45 kD
Form/Buffer	Liquid in 0.42% Potassium phosphate, 0.87% Sodium chloride, pH 7.3, 30% glycerol, and 0.01% sodium azide.
Alternative Names	CD98LC; LAT1; MPE16; Large neutral amino acids transporter small subunit 1; 4F2 light chain; 4F2 LC; 4F2LC; CD98 light chain; Integral membrane protein E16; L-type amino acid transporter 1; hLAT1; Solute carrier family 7 member 5; y+ system cationic amino acid transporter
Gene Symbol	SLC7A5
Entrez Gene	8140(Human); 20539(Mouse); 50719(Rat)
SwissProt	Q01650(Human); Q9Z127(Mouse); Q63016(Rat)

*AREX continuously optimizes our products. Webpage content may not reflect the latest updates. For inquiries, please contact info@arexbio.com or your local distributor.

*Clone Number, Reactivity, Source/Host and Clonality can be found in the product name and Key Features section above.

DATASHEET**LAT1 Rabbit Polyclonal Antibody**

CAT. NO. APA14246

DATA

Western blot analysis of LAT1 expression in MCF7 (A), HepG2 (B), mouse brain (C), rat liver (D) whole cell lysates. (Predicted band size: 55 kD; Observed band size: 45 kD)

STORAGE

Store at 4°C short term. For long term storage, store at -20°C, avoiding freeze/thaw cycles.

NOTE

For Research Use Only. Not for diagnostic, therapeutics, prophylactic or in vivo use.