

**DATASHEET**

**CCL17 Rabbit Polyclonal Antibody**

CAT. NO. APA14248

**KEY FEATURES**

Target	CCL17	Source / Host	Rabbit
Reactivity	Human, Mouse, Rat	Clonality	Polyclonal
Applications	WB	Conjugation	Unconjugated
Form / Buffer	Liquid in 0.42% Potassium phosphate, 0.87% Sodium chloride, pH 7.3, 30% glycerol, and 0.01% sodium azide.		Storage at-20°C

**BACKGROUND**

Chemokine, which displays chemotactic activity for T lymphocytes, preferentially Th2 cells, but not monocytes or granulocytes. Therefore plays an important role in a wide range of inflammatory and immunological processes . Acts by binding to CCR4 at T-cell surface . Mediates GM-CSF/CSF2-driven pain and inflammation . In the brain, required to maintain the typical, highly branched morphology of hippocampal microglia under homeostatic conditions. May be important for the appropriate adaptation of microglial morphology and synaptic plasticity to acute lipopolysaccharide (LPS)-induced neuroinflammation . Plays a role in wound healing, mainly by inducing fibroblast migration into the wound .

**APPLICATION**

To ensure optimal assay performance, AREX recommends conducting reagent titration tailored to each testing system for optimal detection results.

WB	1:500 - 1:1000
----	----------------

\*Results are sample-specific. Please refer to your local assay conditions and test parameters for reference.

**PRODUCT OVERVIEW**

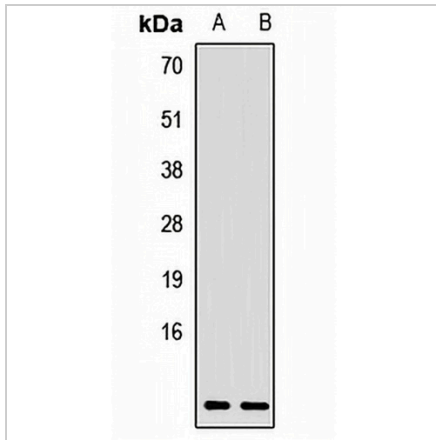
Description	Rabbit polyclonal antibody to CCL17
Specificity	Recognizes endogenous levels of CCL17 protein.
Antibody Type	Primary antibody
Immunogen	Recombinant fusion protein of human CCL17
Purification	The antibody was purified by immunogen affinity chromatography.
Molecular Weight	Predicted: 10 kD; Observed: 11 kD
Form/Buffer	Liquid in 0.42% Potassium phosphate, 0.87% Sodium chloride, pH 7.3, 30% glycerol, and 0.01% sodium azide.
Alternative Names	SCYA17; TARC; C-C motif chemokine 17; CC chemokine TARC; Small-inducible cytokine A17; Thymus and activation-regulated chemokine
Gene Symbol	CCL17
Entrez Gene	6361(Human)
SwissProt	Q92583(Human)

\*AREX continuously optimizes our products. Webpage content may not reflect the latest updates. For inquiries, please contact [info@arexbio.com](mailto:info@arexbio.com) or your local distributor.

\*Clone Number, Reactivity, Source/Host and Clonality can be found in the product name and Key Features section above.

**DATASHEET****CCL17 Rabbit Polyclonal Antibody**

CAT. NO. APA14248

**DATA**

Western blot analysis of CCL17 expression in SW620 (A), mouse testis (B) whole cell lysates. (Predicted band size: 10 kD; Observed band size: 11 kD)

**STORAGE**

Store at 4°C short term. For long term storage, store at -20°C, avoiding freeze/thaw cycles.

**NOTE**

For Research Use Only. Not for diagnostic, therapeutics, prophylactic or in vivo use.