

DATASHEET

Connexin 36 Rabbit Polyclonal Antibody

CAT. NO. APA14250

KEY FEATURES

Target	Connexin 36	Source / Host	Rabbit
Reactivity	Human, Mouse, Rat	Clonality	Polyclonal
Applications	WB	Conjugation	Unconjugated
Form / Buffer	Liquid in 0.42% Potassium phosphate, 0.87% Sodium chloride, pH 7.3, 30% glycerol, and 0.01% sodium azide.		Storage at -20°C

BACKGROUND

One gap junction consists of a cluster of closely packed pairs of transmembrane channels, the connexons, through which materials of low MW diffuse from one cell to a neighboring cell.

APPLICATION

To ensure optimal assay performance, AREX recommends conducting reagent titration tailored to each testing system for optimal detection results.

WB	1:500 - 1:2000
----	----------------

*Results are sample-specific. Please refer to your local assay conditions and test parameters for reference.

PRODUCT OVERVIEW

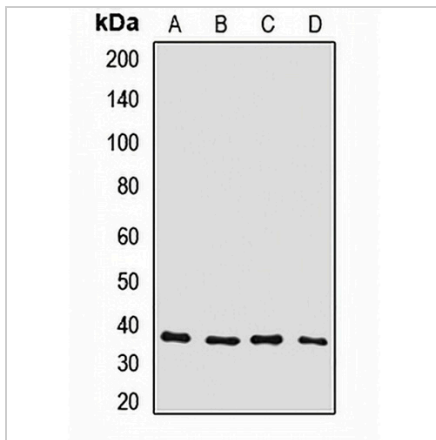
Description	Rabbit polyclonal antibody to Connexin 36
Specificity	Recognizes endogenous levels of Connexin 36 protein.
Antibody Type	Primary antibody
Immunogen	Recombinant fusion protein of human Connexin 36
Purification	The antibody was purified by immunogen affinity chromatography.
Molecular Weight	Predicted: 36 kD; Observed: 37 kD
Form/Buffer	Liquid in 0.42% Potassium phosphate, 0.87% Sodium chloride, pH 7.3, 30% glycerol, and 0.01% sodium azide.
Alternative Names	GJA9; Gap junction delta-2 protein; Connexin-36; Cx36; Gap junction alpha-9 protein
Gene Symbol	GJD2
Entrez Gene	57369(Human); 14617(Mouse); 50564(Rat)
SwissProt	Q9UKL4(Human); O54851(Mouse); O70610(Rat)

*AREX continuously optimizes our products. Webpage content may not reflect the latest updates. For inquiries, please contact info@arexbio.com or your local distributor.

*Clone Number, Reactivity, Source/Host and Clonality can be found in the product name and Key Features section above.

DATASHEET**Connexin 36 Rabbit Polyclonal Antibody**

CAT. NO. APA14250

DATA

Western blot analysis of Connexin 36 expression in Jurkat (A), SHSY5Y (B), mouse brain (C), rat brain (D) whole cell lysates. (Predicted band size: 36 kD; Observed band size: 37 kD)

STORAGE

Store at 4°C short term. For long term storage, store at -20°C, avoiding freeze/thaw cycles.

NOTE

For Research Use Only. Not for diagnostic, therapeutics, prophylactic or in vivo use.