

**DATASHEET**

**GFRA2 Rabbit Polyclonal Antibody**

CAT. NO. APA14253

**KEY FEATURES**

Target	GFRA2	Source / Host	Rabbit
Reactivity	Human, Mouse, Rat	Clonality	Polyclonal
Applications	WB	Conjugation	Unconjugated
Form / Buffer	Liquid in 0.42% Potassium phosphate, 0.87% Sodium chloride, pH 7.3, 30% glycerol, and 0.01% sodium azide.		Storage at-20°C

**BACKGROUND**

Receptor for neurturin (NRTN), a growth factor that supports the survival of sympathetic neurons , a growth factor that supports the survival of sympathetic neurons . NRTN-binding leads to autophosphorylation and activation of the RET receptor . Also able to mediate GDNF signaling through the RET tyrosine kinase receptor .

**APPLICATION**

To ensure optimal assay performance, AREX recommends conducting reagent titration tailored to each testing system for optimal detection results.

WB	1:500 - 1:2000
----	----------------

\*Results are sample-specific. Please refer to your local assay conditions and test parameters for reference.

**PRODUCT OVERVIEW**

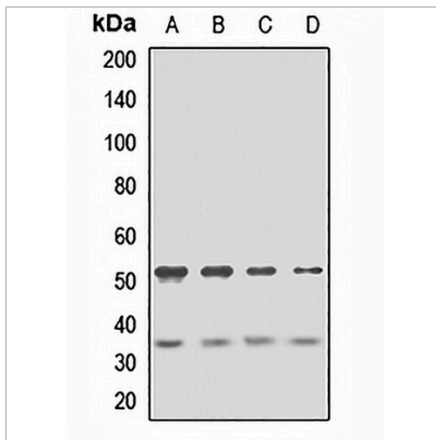
Description	Rabbit polyclonal antibody to GFRA2
Specificity	Recognizes endogenous levels of GFRA2 protein.
Antibody Type	Primary antibody
Immunogen	Recombinant fusion protein of human GFRA2
Purification	The antibody was purified by immunogen affinity chromatography.
Molecular Weight	Predicted: 36; Observed: 34; 55 kD
Form/Buffer	Liquid in 0.42% Potassium phosphate, 0.87% Sodium chloride, pH 7.3, 30% glycerol, and 0.01% sodium azide.
Alternative Names	GDNFRB; RETL2; TRNR2; GDNF family receptor alpha-2; GDNF receptor alpha-2; GDNFR-alpha-2; GFR-alpha-2; GDNF receptor beta; GDNFR-beta; Neurturin receptor alpha; NRTNR-alpha; NTNR-alpha; RET ligand 2; TGF-beta-related neurotrophic factor receptor 2
Gene Symbol	GFRA2
Entrez Gene	2675(Human); 14586(Mouse)
SwissProt	O00451(Human); O08842(Mouse)

\*AREX continuously optimizes our products. Webpage content may not reflect the latest updates. For inquiries, please contact [info@arexbio.com](mailto:info@arexbio.com) or your local distributor.

\*Clone Number, Reactivity, Source/Host and Clonality can be found in the product name and Key Features section above.

**DATASHEET****GFRA2 Rabbit Polyclonal Antibody**

CAT. NO. APA14253

**DATA**

Western blot analysis of GFRA2 expression in HepG2 (A), HeLa (B), mouse lung (C), rat brain (D) whole cell lysates. (Predicted band size: 36; 39; 51 kD; Observed band size: 34; 55 kD)

**STORAGE**

Store at 4°C short term. For long term storage, store at -20°C, avoiding freeze/thaw cycles.

**NOTE**

For Research Use Only. Not for diagnostic, therapeutics, prophylactic or in vivo use.