

DATASHEET

GRK1 Rabbit Polyclonal Antibody

CAT. NO. APA14255

KEY FEATURES

Target	GRK1	Source / Host	Rabbit
Reactivity	Human, Mouse, Rat	Clonality	Polyclonal
Applications	WB, IHC	Conjugation	Unconjugated
Form / Buffer	Liquid in 0.42% Potassium phosphate, 0.87% Sodium chloride, pH 7.3, 30% glycerol, and 0.01% sodium azide.		Storage at -20°C

BACKGROUND

Retina-specific kinase involved in the signal turnoff via phosphorylation of rhodopsin (RHO), the G protein- coupled receptor that initiates the phototransduction cascade , the G protein- coupled receptor that initiates the phototransduction cascade . This rapid desensitization is essential for scotopic vision and permits rapid adaptation to changes in illumination . May play a role in the maintenance of the outer nuclear layer in the retina .

APPLICATION

To ensure optimal assay performance, AREX recommends conducting reagent titration tailored to each testing system for optimal detection results.

WB	1:500 - 1:2000
IHC	1:50 - 1:200

*Results are sample-specific. Please refer to your local assay conditions and test parameters for reference.

PRODUCT OVERVIEW

Description	Rabbit polyclonal antibody to GRK1
Specificity	Recognizes endogenous levels of GRK1 protein.
Antibody Type	Primary antibody
Immunogen	KLH-conjugated synthetic peptide of human GRK1
Purification	The antibody was purified by immunogen affinity chromatography.
Molecular Weight	Predicted: 63 kD; Observed: 64 kD
Form/Buffer	Liquid in 0.42% Potassium phosphate, 0.87% Sodium chloride, pH 7.3, 30% glycerol, and 0.01% sodium azide.
Alternative Names	RHOK; Rhodopsin kinase; RK; G protein-coupled receptor kinase 1
Gene Symbol	GRK1
Entrez Gene	6011(Human); 81760(Rat)
SwissProt	Q15835(Human); Q9WVL4(Mouse); Q63651(Rat)

*AREX continuously optimizes our products. Webpage content may not reflect the latest updates. For inquiries, please contact info@arexbio.com or your local distributor.

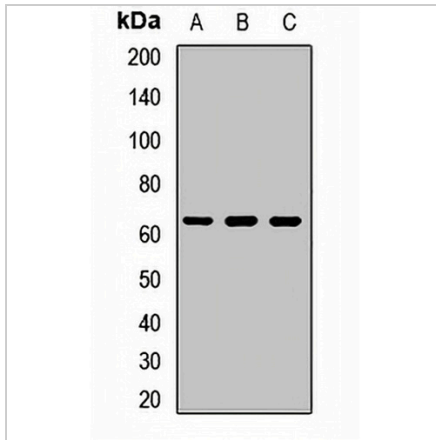
*Clone Number, Reactivity, Source/Host and Clonality can be found in the product name and Key Features section above.

DATASHEET

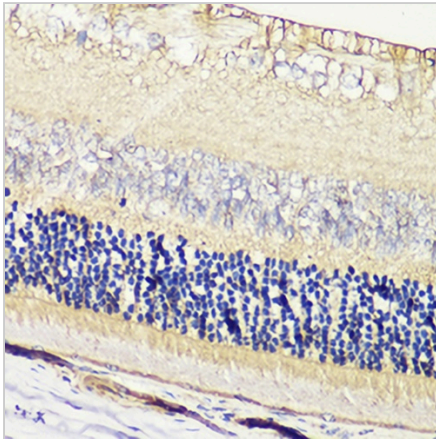
GRK1 Rabbit Polyclonal Antibody

CAT. NO. APA14255

DATA



Western blot analysis of GRK1 expression in Jurkat (A), mouse eye (B), rat liver (C) whole cell lysates. (Predicted band size: 63 kD; Observed band size: 64 kD)



Immunohistochemical analysis of GRK1 staining in rat retina formalin fixed paraffin embedded tissue section. The section was pre-treated using heat mediated antigen retrieval with sodium citrate buffer (pH 6.0). The section was then incubated with the antibody at room temperature and detected using an HRP conjugated compact polymer system. DAB was used as the chromogen. The section was then counterstained with haematoxylin and mounted with DPX.

STORAGE

Store at 4°C short term. For long term storage, store at -20°C, avoiding freeze/thaw cycles.

NOTE

For Research Use Only. Not for diagnostic, therapeutics, prophylactic or in vivo use.