

DATASHEET

Neurofascin Rabbit Polyclonal Antibody

CAT. NO. APA14259

KEY FEATURES

Target	Neurofascin	Source / Host	Rabbit
Reactivity	Human, Mouse, Rat	Clonality	Polyclonal
Applications	WB	Conjugation	Unconjugated
Form / Buffer	Liquid in 0.42% Potassium phosphate, 0.87% Sodium chloride, pH 7.3, 30% glycerol, and 0.01% sodium azide.		Storage at -20°C

BACKGROUND

Cell adhesion, ankyrin-binding protein which may be involved in neurite extension, axonal guidance, synaptogenesis, myelination and neuron-glia cell interactions.

APPLICATION

To ensure optimal assay performance, AREX recommends conducting reagent titration tailored to each testing system for optimal detection results.

WB	1:500 - 1:1000
----	----------------

*Results are sample-specific. Please refer to your local assay conditions and test parameters for reference.

PRODUCT OVERVIEW

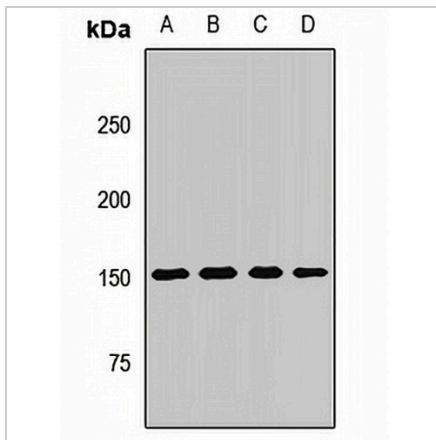
Description	Rabbit polyclonal antibody to Neurofascin
Specificity	Recognizes endogenous levels of Neurofascin protein.
Antibody Type	Primary antibody
Immunogen	Recombinant fusion protein of human Neurofascin
Purification	The antibody was purified by immunogen affinity chromatography.
Molecular Weight	Predicted: 69; Observed: 150 kD
Form/Buffer	Liquid in 0.42% Potassium phosphate, 0.87% Sodium chloride, pH 7.3, 30% glycerol, and 0.01% sodium azide.
Alternative Names	KIAA0756; Neurofascin
Gene Symbol	NFASC
Entrez Gene	23114(Human); 269116(Mouse); 116690(Rat)
SwissProt	O94856(Human); Q810U3(Mouse); P97685(Rat)

*AREX continuously optimizes our products. Webpage content may not reflect the latest updates. For inquiries, please contact info@arexbio.com or your local distributor.

*Clone Number, Reactivity, Source/Host and Clonality can be found in the product name and Key Features section above.

DATASHEET**Neurofascin Rabbit Polyclonal Antibody**

CAT. NO. APA14259

DATA

Western blot analysis of Neurofascin expression in Hela (A), HL60 (B), mouse brain (C), rat brain (D) whole cell lysates. (Predicted band size: 69; 119; 130-150 kD; Observed band size: 150 kD)

STORAGE

Store at 4°C short term. For long term storage, store at -20°C, avoiding freeze/thaw cycles.

NOTE

For Research Use Only. Not for diagnostic, therapeutics, prophylactic or in vivo use.