

**DATASHEET**

**RAMP2 Rabbit Polyclonal Antibody**

CAT. NO. APA14260

**KEY FEATURES**

Target	RAMP2	Source / Host	Rabbit
Reactivity	Human, Mouse, Rat	Clonality	Polyclonal
Applications	WB	Conjugation	Unconjugated
Form / Buffer	Liquid in 0.42% Potassium phosphate, 0.87% Sodium chloride, pH 7.3, 30% glycerol, and 0.01% sodium azide.		Storage at -20°C

**BACKGROUND**

Accessory protein that interacts with and modulates the function of G-protein coupled receptors including calcitonin gene-related peptide type 1 receptor (CALCRL) and calcitonin receptor (CALCR) and calcitonin receptor (CALCR) . Required for the transport of CALCRL to the plasma membrane . Together with CALCRL, form a receptor complex for adrenomedullin/ADM . Together with CALCR, act as a receptor complex for calcitonin/CT/CALC . Together with CALCR, also act as a receptor complex for amylin/IAPP .

**APPLICATION**

To ensure optimal assay performance, AREX recommends conducting reagent titration tailored to each testing system for optimal detection results.

WB	1:500 - 1:2000
----	----------------

\*Results are sample-specific. Please refer to your local assay conditions and test parameters for reference.

**PRODUCT OVERVIEW**

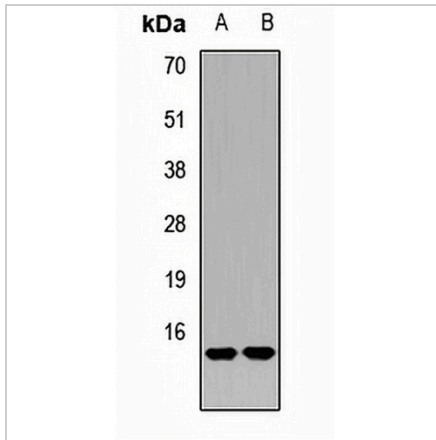
Description	Rabbit polyclonal antibody to RAMP2
Specificity	Recognizes endogenous levels of RAMP2 protein.
Antibody Type	Primary antibody
Immunogen	KLH-conjugated synthetic peptide of human RAMP2
Purification	The antibody was purified by immunogen affinity chromatography.
Molecular Weight	Predicted: 19; Observed: 15 kD
Form/Buffer	Liquid in 0.42% Potassium phosphate, 0.87% Sodium chloride, pH 7.3, 30% glycerol, and 0.01% sodium azide.
Alternative Names	Receptor activity-modifying protein 2; Calcitonin-receptor-like receptor activity-modifying protein 2; CRLR activity-modifying protein 2
Gene Symbol	RAMP2
Entrez Gene	10266(Human); 54409(Mouse); 58966(Rat)
SwissProt	O60895(Human); Q9WUP0(Mouse); Q9JHJ1(Rat)

\*AREX continuously optimizes our products. Webpage content may not reflect the latest updates. For inquiries, please contact [info@arexbio.com](mailto:info@arexbio.com) or your local distributor.

\*Clone Number, Reactivity, Source/Host and Clonality can be found in the product name and Key Features section above.

**DATASHEET****RAMP2 Rabbit Polyclonal Antibody**

CAT. NO. APA14260

**DATA****STORAGE**

Store at 4°C short term. For long term storage, store at -20°C, avoiding freeze/thaw cycles.

**NOTE**

For Research Use Only. Not for diagnostic, therapeutics, prophylactic or in vivo use.