

DATASHEET

Histone H3 (MonoMethyl-R26) Rabbit Polyclonal Antibody

CAT. NO. APA14266

KEY FEATURES

Target	Histone H3 (MonoMethyl-R26)	Source / Host	Rabbit
Reactivity	Human, Mouse, Rat	Clonality	Polyclonal
Applications	WB, IHC, IF/ICC, IP	Conjugation	Unconjugated
Form / Buffer	Liquid in 0.42% Potassium phosphate, 0.87% Sodium chloride, pH 7.3, 30% glycerol, and 0.01% sodium azide.		Storage at-20°C

BACKGROUND

Core component of nucleosome. Nucleosomes wrap and compact DNA into chromatin, limiting DNA accessibility to the cellular machineries which require DNA as a template. Histones thereby play a central role in transcription regulation, DNA repair, DNA replication and chromosomal stability. DNA accessibility is regulated via a complex set of post-translational modifications of histones, also called histone code, and nucleosome remodeling.

APPLICATION

To ensure optimal assay performance, AREX recommends conducting reagent titration tailored to each testing system for optimal detection results.

WB	1:500 - 1:2000
IHC	1:50 - 1:200
IF/ICC	1:50 - 1:200
IP	1:20 - 1:50

*Results are sample-specific. Please refer to your local assay conditions and test parameters for reference.

PRODUCT OVERVIEW

Description	Rabbit polyclonal antibody to Histone H3 (MonoMethyl-R26)
Specificity	Recognizes endogenous levels of Histone H3 protein only when Mono-methylated at R26.
Antibody Type	Primary antibody
Immunogen	KLH-conjugated synthetic Mono-methylated peptide corresponding to residues surrounding R26 of human Histone H3 protein. The exact sequence is proprietary.
Purification	The antibody was purified by immunogen affinity chromatography.
Molecular Weight	Predicted: 15 kD; Observed: 17 kD
Form/Buffer	Liquid in 0.42% Potassium phosphate, 0.87% Sodium chloride, pH 7.3, 30% glycerol, and 0.01% sodium azide.
Alternative Names	H3FT; Histone H3.1t; H3/t; H3t; H3/g
Gene Symbol	HIST3H3
Entrez Gene	8290(Human)
SwissProt	Q16695(Human)

*AREX continuously optimizes our products. Webpage content may not reflect the latest updates. For inquiries, please contact info@arexbio.com or your local distributor.

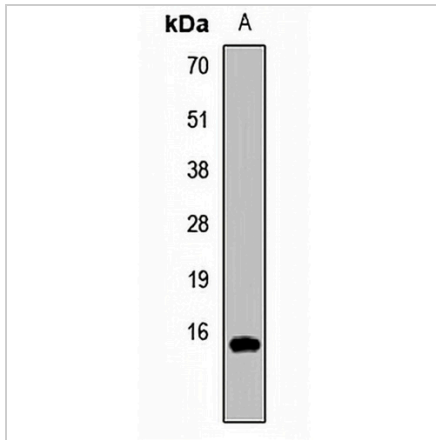
*Clone Number, Reactivity, Source/Host and Clonality can be found in the product name and Key Features section above.

DATASHEET

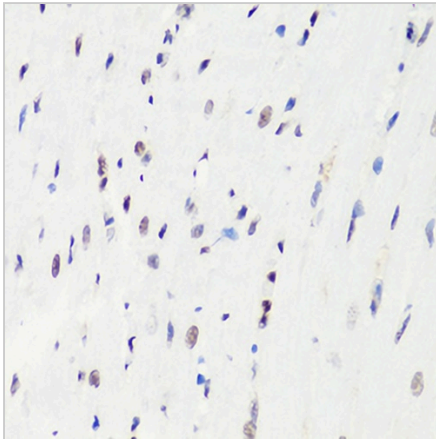
Histone H3 (MonoMethyl-R26) Rabbit Polyclonal Antibody

CAT. NO. APA14266

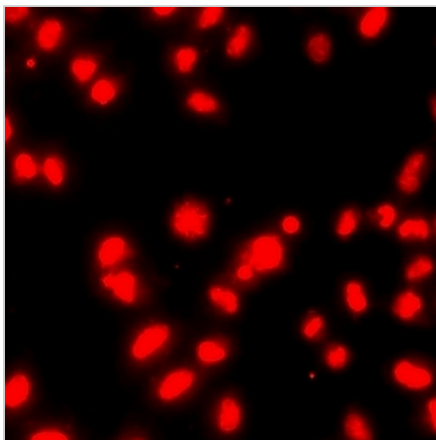
DATA



Western blot analysis of Histone H3 (MonoMethyl-R26) expression in HeLa (A) whole cell lysates. (Predicted band size: 15 kD; Observed band size: 17 kD)



Immunohistochemical analysis of Histone H3 (MonoMethyl-R26) staining in rat heart formalin fixed paraffin embedded tissue section. The section was pre-treated using heat mediated antigen retrieval with sodium citrate buffer (pH 6.0). The section was then incubated with the antibody at room temperature and detected using an HRP conjugated compact polymer system. DAB was used as the chromogen. The section was then counterstained with haematoxylin and mounted with DPX.



Immunofluorescent analysis of Histone H3 (MonoMethyl-R26) staining in HEK293T cells. Formalin-fixed cells were permeabilized with 0.1% Triton X-100 in TBS for 5-10 minutes and blocked with 3% BSA-PBS for 30 minutes at room temperature. Cells were probed with the primary antibody in 3% BSA-PBS and incubated overnight at 4 °C in a humidified chamber. Cells were washed with PBST and incubated with a DyLight 594-conjugated secondary antibody (red) in PBS at room temperature in the dark.

STORAGE

Store at 4°C short term. For long term storage, store at -20°C, avoiding freeze/thaw cycles.

NOTE

For Research Use Only. Not for diagnostic, therapeutics, prophylactic or in vivo use.