

DATASHEET

SETD2 Rabbit Polyclonal Antibody

CAT. NO. APA14273

KEY FEATURES

Target	SETD2	Source / Host	Rabbit
Reactivity	Human, Mouse, Rat	Clonality	Polyclonal
Applications	WB, IF/ICC, IP	Conjugation	Unconjugated
Form / Buffer	Liquid in 0.42% Potassium phosphate, 0.87% Sodium chloride, pH 7.3, 30% glycerol, and 0.01% sodium azide.		Storage at -20°C

BACKGROUND

Histone methyltransferase that specifically trimethylates 'Lys-36' of histone H3 (H3K36me3) using dimethylated 'Lys-36' (H3K36me2) as substrate using dimethylated 'Lys-36' (H3K36me2) as substrate . It is capable of trimethylating unmethylated H3K36 (H3K36me0) in vitro . Represents the main enzyme generating H3K36me3, a specific tag for epigenetic transcriptional activation . Plays a role in chromatin structure modulation during elongation by coordinating recruitment of the FACT complex and by interacting with hyperphosphorylated POLR2A .

APPLICATION

To ensure optimal assay performance, AREX recommends conducting reagent titration tailored to each testing system for optimal detection results.

WB	1:500 - 1:2000
IF/ICC	1:50 - 1:200
IP	1:50 - 1:100

*Results are sample-specific. Please refer to your local assay conditions and test parameters for reference.

PRODUCT OVERVIEW

Description	Rabbit polyclonal antibody to SETD2
Specificity	Recognizes endogenous levels of SETD2 protein.
Antibody Type	Primary antibody
Immunogen	Recombinant fusion protein of human SETD2
Purification	The antibody was purified by immunogen affinity chromatography.
Molecular Weight	Predicted: 175; Observed: 288 kD
Form/Buffer	Liquid in 0.42% Potassium phosphate, 0.87% Sodium chloride, pH 7.3, 30% glycerol, and 0.01% sodium azide.
Alternative Names	HIF1; HYPB; KIAA1732; KMT3A; SET2; Histone-lysine N-methyltransferase SETD2; HIF-1; Huntingtin yeast partner B; Huntingtin-interacting protein 1; HIP-1; Huntingtin-interacting protein B; Lysine N-methyltransferase 3A; SET domain-containing protein 2; hSET2; p231HBP
Gene Symbol	SETD2
Entrez Gene	29072(Human); 235626(Mouse)
SwissProt	Q9BYW2(Human); E9Q5F9(Mouse)

*AREX continuously optimizes our products. Webpage content may not reflect the latest updates. For inquiries, please contact info@arexbio.com or your local distributor.

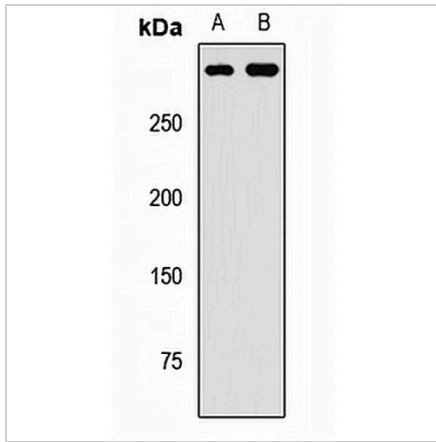
*Clone Number, Reactivity, Source/Host and Clonality can be found in the product name and Key Features section above.

DATASHEET

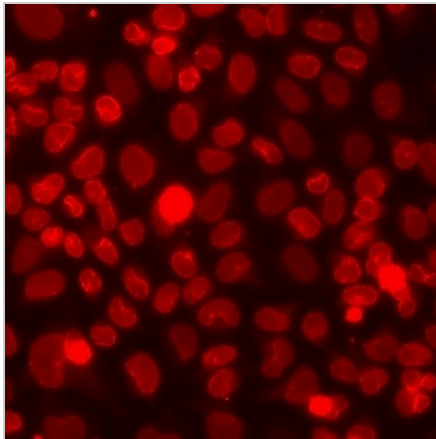
SETD2 Rabbit Polyclonal Antibody

CAT. NO. APA14273

DATA



Western blot analysis of SETD2 expression in mouse brain (A), mouse lung (B) whole cell lysates. (Predicted band size: 175; 192; 287 kD; Observed band size: 288 kD)



Immunofluorescent analysis of SETD2 staining in A549 cells. Formalin-fixed cells were permeabilized with 0.1% Triton X-100 in TBS for 5-10 minutes and blocked with 3% BSA-PBS for 30 minutes at room temperature. Cells were probed with the primary antibody in 3% BSA-PBS and incubated overnight at 4 °C in a humidified chamber. Cells were washed with PBST and incubated with a DyLight 594-conjugated secondary antibody (red) in PBS at room temperature in the dark.

STORAGE

Store at 4°C short term. For long term storage, store at -20°C, avoiding freeze/thaw cycles.

NOTE

For Research Use Only. Not for diagnostic, therapeutics, prophylactic or in vivo use.