

DATASHEET

SOS1 Rabbit Polyclonal Antibody

CAT. NO. APA14279

KEY FEATURES

Target	SOS1	Source / Host	Rabbit
Reactivity	Human, Mouse, Rat	Clonality	Polyclonal
Applications	WB	Conjugation	Unconjugated
Form / Buffer	Liquid in 0.42% Potassium phosphate, 0.87% Sodium chloride, pH 7.3, 30% glycerol, and 0.01% sodium azide.		Storage at -20°C

BACKGROUND

Promotes the exchange of Ras-bound GDP by GTP . Probably by promoting Ras activation, regulates phosphorylation of MAP kinase MAPK3/ERK1 in response to EGF . Catalytic component of a trimeric complex that participates in transduction of signals from Ras to Rac by promoting the Rac-specific guanine nucleotide exchange factor (GEF) activity .

APPLICATION

To ensure optimal assay performance, AREX recommends conducting reagent titration tailored to each testing system for optimal detection results.

WB	1:500 - 1:1000
----	----------------

*Results are sample-specific. Please refer to your local assay conditions and test parameters for reference.

PRODUCT OVERVIEW

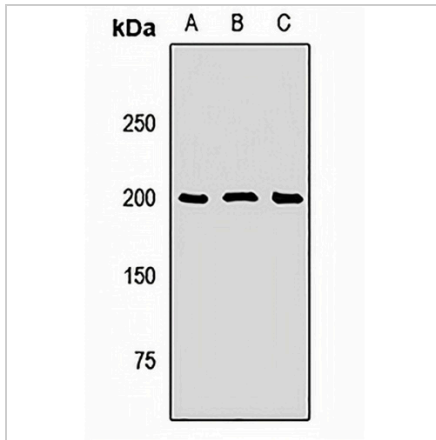
Description	Rabbit polyclonal antibody to SOS1
Specificity	Recognizes endogenous levels of SOS1 protein.
Antibody Type	Primary antibody
Immunogen	Recombinant fusion protein of human SOS1
Purification	The antibody was purified by immunogen affinity chromatography.
Molecular Weight	Predicted: 36; Observed: 200 kD
Form/Buffer	Liquid in 0.42% Potassium phosphate, 0.87% Sodium chloride, pH 7.3, 30% glycerol, and 0.01% sodium azide.
Alternative Names	Son of sevenless homolog 1; SOS-1
Gene Symbol	SOS1
Entrez Gene	6654(Human); 20662(Mouse)
SwissProt	Q07889(Human); Q62245(Mouse)

*AREX continuously optimizes our products. Webpage content may not reflect the latest updates. For inquiries, please contact info@arexbio.com or your local distributor.

*Clone Number, Reactivity, Source/Host and Clonality can be found in the product name and Key Features section above.

DATASHEET**SOS1 Rabbit Polyclonal Antibody**

CAT. NO. APA14279

DATA

Western blot analysis of SOS1 expression in Hela (A), mouse liver (B), rat brain (C) whole cell lysates. (Predicted band size: 36; 152 kD; Observed band size: 200 kD)

STORAGE

Store at 4°C short term. For long term storage, store at -20°C, avoiding freeze/thaw cycles.

NOTE

For Research Use Only. Not for diagnostic, therapeutics, prophylactic or in vivo use.