

DATASHEET

ROR1 Rabbit Polyclonal Antibody

CAT. NO. APA14283

KEY FEATURES

Target	ROR1	Source / Host	Rabbit
Reactivity	Human, Mouse	Clonality	Polyclonal
Applications	WB, IF/ICC	Conjugation	Unconjugated
Form / Buffer	Liquid in 0.42% Potassium phosphate, 0.87% Sodium chloride, pH 7.3, 30% glycerol, and 0.01% sodium azide.		Storage at -20°C

BACKGROUND

Has very low kinase activity in vitro and is unlikely to function as a tyrosine kinase in vivo . Receptor for ligand WNT5A which activate downstream NFκB signaling pathway and may result in the inhibition of WNT3A-mediated signaling . In inner ear, crucial for spiral ganglion neurons to innervate auditory hair cells . Via IGFBP5 ligand, forms a complex with ERBB2 to enhance CREB oncogenic signaling .

APPLICATION

To ensure optimal assay performance, AREX recommends conducting reagent titration tailored to each testing system for optimal detection results.

WB	1:500 - 1:2000
IF/ICC	1:50 - 1:200

*Results are sample-specific. Please refer to your local assay conditions and test parameters for reference.

PRODUCT OVERVIEW

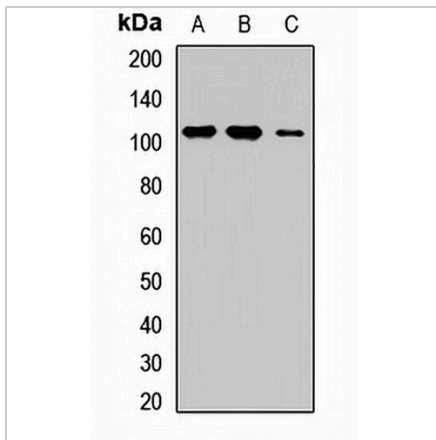
Description	Rabbit polyclonal antibody to ROR1
Specificity	Recognizes endogenous levels of ROR1 protein.
Antibody Type	Primary antibody
Immunogen	Recombinant fusion protein of human ROR1
Purification	The antibody was purified by immunogen affinity chromatography.
Molecular Weight	Predicted: 42; Observed: 135 kD
Form/Buffer	Liquid in 0.42% Potassium phosphate, 0.87% Sodium chloride, pH 7.3, 30% glycerol, and 0.01% sodium azide.
Alternative Names	NTRKR1; Tyrosine-protein kinase transmembrane receptor ROR1; Neurotrophic tyrosine kinase, receptor-related 1
Gene Symbol	ROR1
Entrez Gene	4919(Human); 26563(Mouse)
SwissProt	Q01973(Human); Q9Z139(Mouse)

*AREX continuously optimizes our products. Webpage content may not reflect the latest updates. For inquiries, please contact info@arex.bio or your local distributor.

*Clone Number, Reactivity, Source/Host and Clonality can be found in the product name and Key Features section above.

DATASHEET**ROR1 Rabbit Polyclonal Antibody**

CAT. NO. APA14283

DATA

Western blot analysis of ROR1 expression in A549 (A), HT29 (B), SKOV3 (C) whole cell lysates. (Predicted band size: 42; 43; 104 kD; Observed band size: 135 kD)

STORAGE

Store at 4°C short term. For long term storage, store at -20°C, avoiding freeze/thaw cycles.

NOTE

For Research Use Only. Not for diagnostic, therapeutics, prophylactic or in vivo use.