

**DATASHEET**

**Cyclin B2 Rabbit Polyclonal Antibody**

CAT. NO. APA14286

**KEY FEATURES**

Target	Cyclin B2	Source / Host	Rabbit
Reactivity	Human, Mouse, Rat	Clonality	Polyclonal
Applications	WB, IHC	Conjugation	Unconjugated
Form / Buffer	Liquid in 0.42% Potassium phosphate, 0.87% Sodium chloride, pH 7.3, 30% glycerol, and 0.01% sodium azide.		Storage at -20°C

**BACKGROUND**

Essential for the control of the cell cycle at the G2/M (mitosis) transition.

**APPLICATION**

To ensure optimal assay performance, AREX recommends conducting reagent titration tailored to each testing system for optimal detection results.

WB	1:500 - 1:2000
IHC	1:50 - 1:200

\*Results are sample-specific. Please refer to your local assay conditions and test parameters for reference.

**PRODUCT OVERVIEW**

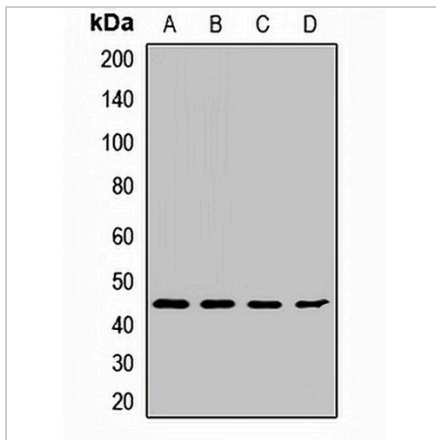
Description	Rabbit polyclonal antibody to Cyclin B2
Specificity	Recognizes endogenous levels of Cyclin B2 protein.
Antibody Type	Primary antibody
Immunogen	Recombinant fusion protein of human Cyclin B2
Purification	The antibody was purified by immunogen affinity chromatography.
Molecular Weight	Predicted: 45 kD; Observed: 45 kD
Form/Buffer	Liquid in 0.42% Potassium phosphate, 0.87% Sodium chloride, pH 7.3, 30% glycerol, and 0.01% sodium azide.
Alternative Names	G2/mitotic-specific cyclin-B2
Gene Symbol	CCNB2
Entrez Gene	9133(Human); 12442(Mouse)
SwissProt	O95067(Human); P30276(Mouse)

\*AREX continuously optimizes our products. Webpage content may not reflect the latest updates. For inquiries, please contact [info@arexbio.com](mailto:info@arexbio.com) or your local distributor.

\*Clone Number, Reactivity, Source/Host and Clonality can be found in the product name and Key Features section above.

**DATASHEET****Cyclin B2 Rabbit Polyclonal Antibody**

CAT. NO. APA14286

**DATA**

Western blot analysis of Cyclin B2 expression in Hela (A), A431 (B), K562 (C), mouse thymus (D) whole cell lysates. (Predicted band size: 45 kD; Observed band size: 45 kD)

**STORAGE**

Store at 4°C short term. For long term storage, store at -20°C, avoiding freeze/thaw cycles.

**NOTE**

For Research Use Only. Not for diagnostic, therapeutics, prophylactic or in vivo use.