

**DATASHEET**

**Sam50 Rabbit Polyclonal Antibody**

CAT. NO. APA14289

**KEY FEATURES**

Target	Sam50	Source / Host	Rabbit
Reactivity	Human, Mouse, Rat	Clonality	Polyclonal
Applications	WB, IHC	Conjugation	Unconjugated
Form / Buffer	Liquid in 0.42% Potassium phosphate, 0.87% Sodium chloride, pH 7.3, 30% glycerol, and 0.01% sodium azide.		Storage at -20°C

**BACKGROUND**

Plays a crucial role in the maintenance of the structure of mitochondrial cristae and the proper assembly of the mitochondrial respiratory chain complexes. Required for the assembly of TOMM40 into the TOM complex.

**APPLICATION**

To ensure optimal assay performance, AREX recommends conducting reagent titration tailored to each testing system for optimal detection results.

WB	1:500 - 1:2000
IHC	1:50 - 1:200

\*Results are sample-specific. Please refer to your local assay conditions and test parameters for reference.

**PRODUCT OVERVIEW**

Description	Rabbit polyclonal antibody to Sam50
Specificity	Recognizes endogenous levels of Sam50 protein.
Antibody Type	Primary antibody
Immunogen	Recombinant fusion protein of human Sam50
Purification	The antibody was purified by immunogen affinity chromatography.
Molecular Weight	Predicted: 51 kD; Observed: 55 kD
Form/Buffer	Liquid in 0.42% Potassium phosphate, 0.87% Sodium chloride, pH 7.3, 30% glycerol, and 0.01% sodium azide.
Alternative Names	SAM50; Sorting and assembly machinery component 50 homolog; Transformation-related gene 3 protein; TRG-3
Gene Symbol	SAMM50
Entrez Gene	25813(Human); 68653(Mouse); 300111(Rat)
SwissProt	Q9Y512(Human); Q8BGH2(Mouse); Q6AXV4(Rat)

\*AREX continuously optimizes our products. Webpage content may not reflect the latest updates. For inquiries, please contact [info@arexbio.com](mailto:info@arexbio.com) or your local distributor.

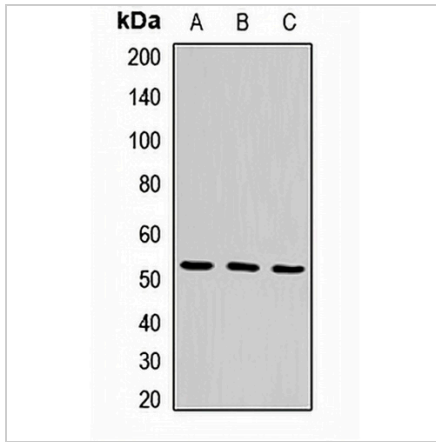
\*Clone Number, Reactivity, Source/Host and Clonality can be found in the product name and Key Features section above.

**DATASHEET**

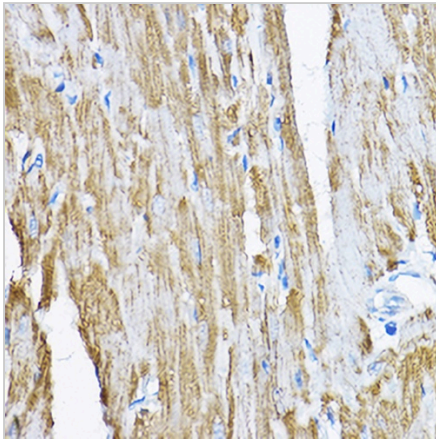
**Sam50 Rabbit Polyclonal Antibody**

CAT. NO. APA14289

**DATA**



Western blot analysis of Sam50 expression in A431 (A), HL60 (B), mouse heart (C) whole cell lysates. (Predicted band size: 51 kD; Observed band size: 55 kD)



Immunohistochemical analysis of Sam50 staining in rat heart formalin fixed paraffin embedded tissue section. The section was pre-treated using heat mediated antigen retrieval with sodium citrate buffer (pH 6.0). The section was then incubated with the antibody at room temperature and detected using an HRP conjugated compact polymer system. DAB was used as the chromogen. The section was then counterstained with haematoxylin and mounted with DPX.

**STORAGE**

Store at 4°C short term. For long term storage, store at -20°C, avoiding freeze/thaw cycles.

**NOTE**

For Research Use Only. Not for diagnostic, therapeutics, prophylactic or in vivo use.