

DATASHEET

CLE Rabbit Polyclonal Antibody

CAT. NO. APA14291

KEY FEATURES

Target	CLE	Source / Host	Rabbit
Reactivity	Human, Mouse	Clonality	Polyclonal
Applications	WB	Conjugation	Unconjugated
Form / Buffer	Liquid in 0.42% Potassium phosphate, 0.87% Sodium chloride, pH 7.3, 30% glycerol, and 0.01% sodium azide.		Storage at-20°C

BACKGROUND

Accessory subunit of the tRNA-splicing ligase complex that acts by directly joining spliced tRNA halves to mature-sized tRNAs by incorporating the precursor-derived splice junction phosphate into the mature tRNA as a canonical 3',5'-phosphodiester. RNA-binding protein involved in modulation of mRNA transcription by Polymerase II. Could also play a role in RNA transport.

APPLICATION

To ensure optimal assay performance, AREX recommends conducting reagent titration tailored to each testing system for optimal detection results.

WB	1:500 - 1:1000
----	----------------

*Results are sample-specific. Please refer to your local assay conditions and test parameters for reference.

PRODUCT OVERVIEW

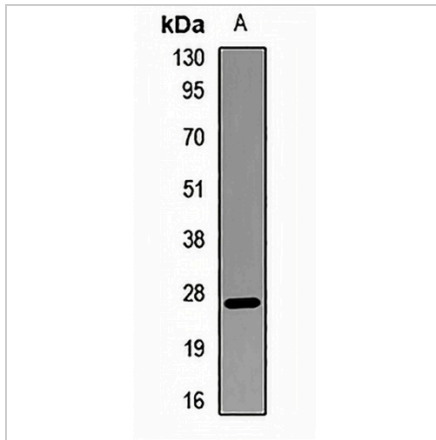
Description	Rabbit polyclonal antibody to CLE
Specificity	Recognizes endogenous levels of CLE protein.
Antibody Type	Primary antibody
Immunogen	Recombinant fusion protein of human CLE
Purification	The antibody was purified by immunogen affinity chromatography.
Molecular Weight	Predicted: 28 kD; Observed: 25 kD
Form/Buffer	Liquid in 0.42% Potassium phosphate, 0.87% Sodium chloride, pH 7.3, 30% glycerol, and 0.01% sodium azide.
Alternative Names	UPF0568 protein C14orf166; CLE7 homolog; CLE
Gene Symbol	C14orf166
Entrez Gene	51637(Human); 68045(Mouse)
SwissProt	Q9Y224(Human); Q9CQE8(Mouse)

*AREX continuously optimizes our products. Webpage content may not reflect the latest updates. For inquiries, please contact info@arexbio.com or your local distributor.

*Clone Number, Reactivity, Source/Host and Clonality can be found in the product name and Key Features section above.

DATASHEET**CLE Rabbit Polyclonal Antibody**

CAT. NO. APA14291

DATA

Western blot analysis of CLE expression in Jurkat (A) whole cell lysates. (Predicted band size: 28 kD; Observed band size: 25 kD)

STORAGE

Store at 4°C short term. For long term storage, store at -20°C, avoiding freeze/thaw cycles.

NOTE

For Research Use Only. Not for diagnostic, therapeutics, prophylactic or in vivo use.