

DATASHEET

FANCI Rabbit Polyclonal Antibody

CAT. NO. APA14292

KEY FEATURES

Target	FANCI	Source / Host	Rabbit
Reactivity	Human, Mouse	Clonality	Polyclonal
Applications	WB	Conjugation	Unconjugated
Form / Buffer	Liquid in 0.42% Potassium phosphate, 0.87% Sodium chloride, pH 7.3, 30% glycerol, and 0.01% sodium azide.		Storage at -20°C

BACKGROUND

Plays an essential role in the repair of DNA double-strand breaks by homologous recombination and in the repair of interstrand DNA cross-links (ICLs) by promoting FANCD2 monoubiquitination by FANCL and participating in recruitment to DNA repair sites by promoting FANCD2 monoubiquitination by FANCL and participating in recruitment to DNA repair sites . The FANCI-FANCD2 complex binds and scans double-stranded DNA (dsDNA) for DNA damage; this complex stalls at DNA junctions between double-stranded DNA and single-stranded DNA . Participates in S phase and G2 phase checkpoint activation upon DNA damage .

APPLICATION

To ensure optimal assay performance, AREX recommends conducting reagent titration tailored to each testing system for optimal detection results.

WB	1:500 - 1:2000
----	----------------

*Results are sample-specific. Please refer to your local assay conditions and test parameters for reference.

PRODUCT OVERVIEW

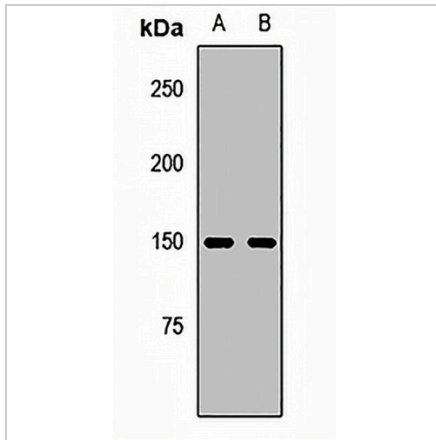
Description	Rabbit polyclonal antibody to FANCI
Specificity	Recognizes endogenous levels of FANCI protein.
Antibody Type	Primary antibody
Immunogen	Recombinant fusion protein of human FANCI
Purification	The antibody was purified by immunogen affinity chromatography.
Molecular Weight	Predicted: 27; Observed: 149 kD
Form/Buffer	Liquid in 0.42% Potassium phosphate, 0.87% Sodium chloride, pH 7.3, 30% glycerol, and 0.01% sodium azide.
Alternative Names	KIAA1794; Fanconi anemia group I protein; Protein FACI
Gene Symbol	FANCI
Entrez Gene	55215(Human); 208836(Mouse)
SwissProt	Q9NVI1(Human); Q8K368(Mouse)

*AREX continuously optimizes our products. Webpage content may not reflect the latest updates. For inquiries, please contact info@arexbio.com or your local distributor.

*Clone Number, Reactivity, Source/Host and Clonality can be found in the product name and Key Features section above.

DATASHEET**FANCI Rabbit Polyclonal Antibody**

CAT. NO. APA14292

DATA**STORAGE**

Store at 4°C short term. For long term storage, store at -20°C, avoiding freeze/thaw cycles.

NOTE

For Research Use Only. Not for diagnostic, therapeutics, prophylactic or in vivo use.