

**DATASHEET**

**SLITRK6 Rabbit Polyclonal Antibody**

CAT. NO. APA14294

**KEY FEATURES**

Target	SLITRK6	Source / Host	Rabbit
Reactivity	Human, Mouse, Rat	Clonality	Polyclonal
Applications	WB	Conjugation	Unconjugated
Form / Buffer	Liquid in 0.42% Potassium phosphate, 0.87% Sodium chloride, pH 7.3, 30% glycerol, and 0.01% sodium azide.		Storage at -20°C

**BACKGROUND**

Regulator of neurite outgrowth required for normal hearing and vision.

**APPLICATION**

To ensure optimal assay performance, AREX recommends conducting reagent titration tailored to each testing system for optimal detection results.

WB	1:500 - 1:2000
----	----------------

\*Results are sample-specific. Please refer to your local assay conditions and test parameters for reference.

**PRODUCT OVERVIEW**

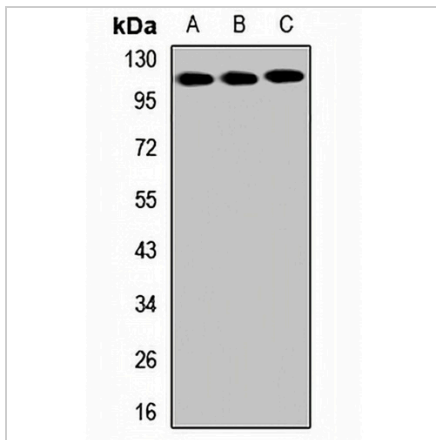
Description	Rabbit polyclonal antibody to SLITRK6
Specificity	Recognizes endogenous levels of SLITRK6 protein.
Antibody Type	Primary antibody
Immunogen	Recombinant fusion protein of human SLITRK6
Purification	The antibody was purified by immunogen affinity chromatography.
Molecular Weight	Predicted: 95 kD; Observed: 120 kD
Form/Buffer	Liquid in 0.42% Potassium phosphate, 0.87% Sodium chloride, pH 7.3, 30% glycerol, and 0.01% sodium azide.
Alternative Names	SLIT and NTRK-like protein 6
Gene Symbol	SLITRK6
Entrez Gene	84189(Human); 239250(Mouse)
SwissProt	Q9H5Y7(Human); Q8C110(Mouse)

\*AREX continuously optimizes our products. Webpage content may not reflect the latest updates. For inquiries, please contact [info@arexbio.com](mailto:info@arexbio.com) or your local distributor.

\*Clone Number, Reactivity, Source/Host and Clonality can be found in the product name and Key Features section above.

**DATASHEET****SLITRK6 Rabbit Polyclonal Antibody**

CAT. NO. APA14294

**DATA**

Western blot analysis of SLITRK6 expression in HEK293T (A), mouse brain (B), rat brain (C) whole cell lysates. (Predicted band size: 95 kD; Observed band size: 120 kD)

**STORAGE**

Store at 4°C short term. For long term storage, store at -20°C, avoiding freeze/thaw cycles.

**NOTE**

For Research Use Only. Not for diagnostic, therapeutics, prophylactic or in vivo use.