

DATASHEET

GUCY2D Rabbit Polyclonal Antibody

CAT. NO. APA14298

KEY FEATURES

Target	GUCY2D	Source / Host	Rabbit
Reactivity	Human, Mouse, Rat	Clonality	Polyclonal
Applications	WB	Conjugation	Unconjugated
Form / Buffer	Liquid in 0.42% Potassium phosphate, 0.87% Sodium chloride, pH 7.3, 30% glycerol, and 0.01% sodium azide.		Storage at -20°C

BACKGROUND

Catalyzes the synthesis of cyclic GMP (cGMP) in rods and cones of photoreceptors. Plays an essential role in phototransduction, by mediating cGMP replenishment in rods and cones of photoreceptors. Plays an essential role in phototransduction, by mediating cGMP replenishment. May also participate in the trafficking of membrane-associated proteins to the photoreceptor outer segment membrane.

APPLICATION

To ensure optimal assay performance, AREX recommends conducting reagent titration tailored to each testing system for optimal detection results.

WB	1:500 - 1:2000
----	----------------

*Results are sample-specific. Please refer to your local assay conditions and test parameters for reference.

PRODUCT OVERVIEW

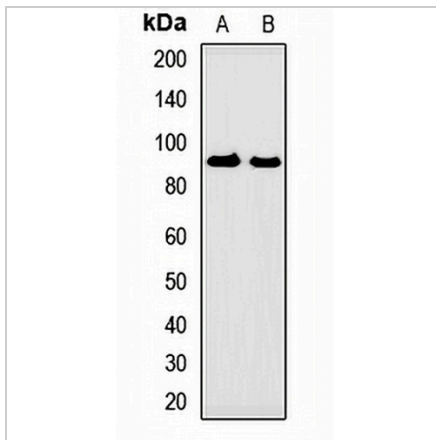
Description	Rabbit polyclonal antibody to GUCY2D
Specificity	Recognizes endogenous levels of GUCY2D protein.
Antibody Type	Primary antibody
Immunogen	Recombinant fusion protein of human GUCY2D
Purification	The antibody was purified by immunogen affinity chromatography.
Molecular Weight	Predicted: 120 kD; Observed: 95 kD
Form/Buffer	Liquid in 0.42% Potassium phosphate, 0.87% Sodium chloride, pH 7.3, 30% glycerol, and 0.01% sodium azide.
Alternative Names	CORD6; GUC1A4; GUC2D; RETGC; RETGC1; Retinal guanylyl cyclase 1; RETGC-1; Guanylate cyclase 2D, retinal; Rod outer segment membrane guanylate cyclase; ROS-GC
Gene Symbol	GUCY2D
Entrez Gene	3000(Human); 113911(Rat)
SwissProt	Q02846(Human); P51839(Rat)

*AREX continuously optimizes our products. Webpage content may not reflect the latest updates. For inquiries, please contact info@arexbio.com or your local distributor.

*Clone Number, Reactivity, Source/Host and Clonality can be found in the product name and Key Features section above.

DATASHEET**GUCY2D Rabbit Polyclonal Antibody**

CAT. NO. APA14298

DATA

Western blot analysis of GUCY2D expression in mouse brain (A), mouse kidney (B) whole cell lysates. (Predicted band size: 120 kD; Observed band size: 95 kD)

STORAGE

Store at 4°C short term. For long term storage, store at -20°C, avoiding freeze/thaw cycles.

NOTE

For Research Use Only. Not for diagnostic, therapeutics, prophylactic or in vivo use.