

DATASHEET

LRP2 Rabbit Polyclonal Antibody

CAT. NO. APA14299

KEY FEATURES

Target	LRP2	Source / Host	Rabbit
Reactivity	Human, Mouse, Rat	Clonality	Polyclonal
Applications	WB, IHC, IF/ICC	Conjugation	Unconjugated
Form / Buffer	Liquid in 0.42% Potassium phosphate, 0.87% Sodium chloride, pH 7.3, 30% glycerol, and 0.01% sodium azide.		Storage at -20°C

BACKGROUND

Multiligand endocytic receptor . Acts together with CUBN to mediate endocytosis of high-density lipoproteins . Mediates receptor-mediated uptake of polybasic drugs such as aprotinin, aminoglycosides and polymyxin B . In the kidney, mediates the tubular uptake and clearance of leptin . Also mediates transport of leptin across the blood-brain barrier through endocytosis at the choroid plexus epithelium . Endocytosis of leptin in neuronal cells is required for hypothalamic leptin signaling and leptin-mediated regulation of feeding and body weight . Mediates endocytosis and subsequent lysosomal degradation of CST3 in kidney proximal tubule cells . Mediates renal uptake of 25-hydroxyvitamin D3 in complex with the vitamin D3 transporter GC/DBP .

APPLICATION

To ensure optimal assay performance, AREX recommends conducting reagent titration tailored to each testing system for optimal detection results.

WB	1:500 - 1:2000
IHC	1:50 - 1:200
IF/ICC	1:50 - 1:200

*Results are sample-specific. Please refer to your local assay conditions and test parameters for reference.

PRODUCT OVERVIEW

Description	Rabbit polyclonal antibody to LRP2
Specificity	Recognizes endogenous levels of LRP2 protein.
Antibody Type	Primary antibody
Immunogen	Recombinant fusion protein of human LRP2
Purification	The antibody was purified by immunogen affinity chromatography.
Molecular Weight	Predicted: 521 kD; Observed: 521 kD
Form/Buffer	Liquid in 0.42% Potassium phosphate, 0.87% Sodium chloride, pH 7.3, 30% glycerol, and 0.01% sodium azide.
Alternative Names	Low-density lipoprotein receptor-related protein 2; LRP-2; Glycoprotein 330; gp330; Megalin
Gene Symbol	LRP2
Entrez Gene	4036(Human); 14725(Mouse); 29216(Rat)
SwissProt	P98164(Human); A2ARV4(Mouse); P98158(Rat)

*AREX continuously optimizes our products. Webpage content may not reflect the latest updates. For inquiries, please contact info@arexbio.com or your local distributor.

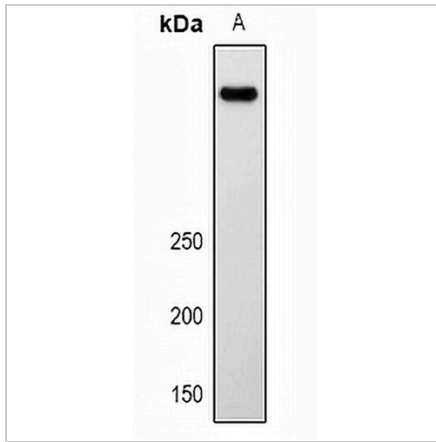
*Clone Number, Reactivity, Source/Host and Clonality can be found in the product name and Key Features section above.

DATASHEET

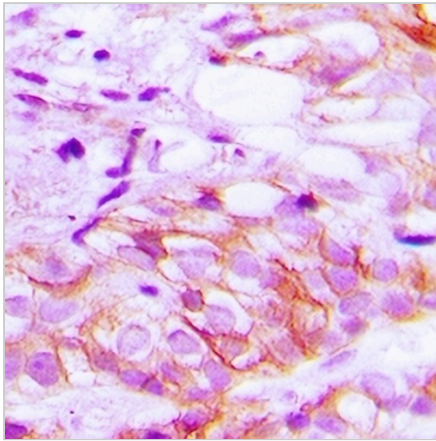
LRP2 Rabbit Polyclonal Antibody

CAT. NO. APA14299

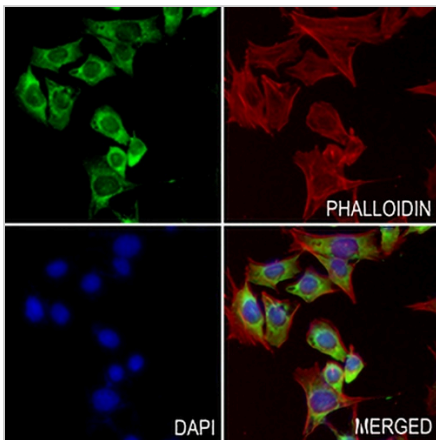
DATA



Western blot analysis of LRP2 expression in mouse lung (A) whole cell lysates. (Predicted band size: 521 kD; Observed band size: 521 kD)



Immunohistochemical analysis of LRP2 staining in human breast cancer formalin fixed paraffin embedded tissue section. The section was pre-treated using heat mediated antigen retrieval with sodium citrate buffer (pH 6.0). The section was then incubated with the antibody at room temperature and detected using an HRP conjugated compact polymer system. DAB was used as the chromogen. The section was then counterstained with haematoxylin and mounted with DPX.



Immunofluorescent analysis of LRP2 staining in MOVAS cells. Formalin-fixed cells were permeabilized with 0.1% Triton X-100 in TBS for 5-10 minutes and blocked with 3% BSA-PBS for 30 minutes at room temperature. Cells were probed with the primary antibody in 3% BSA-PBS and incubated overnight at 4 °C in a humidified chamber. Cells were washed with PBST and incubated with a AREX® Fluor 488 -conjugated secondary antibody (green) in PBS at room temperature in the dark. Phalloidin - AREX® Fluor 594 was used to stain Actin filaments (red). DAPI was used to stain the cell nuclei (blue).

STORAGE

Store at 4°C short term. For long term storage, store at -20°C, avoiding freeze/thaw cycles.

NOTE

For Research Use Only. Not for diagnostic, therapeutics, prophylactic or in vivo use.