

DATASHEET

Polycystin 2 Rabbit Polyclonal Antibody

CAT. NO. APA14300

KEY FEATURES

Target	Polycystin 2	Source / Host	Rabbit
Reactivity	Human, Mouse, Rat	Clonality	Polyclonal
Applications	WB	Conjugation	Unconjugated
Form / Buffer	Liquid in 0.42% Potassium phosphate, 0.87% Sodium chloride, pH 7.3, 30% glycerol, and 0.01% sodium azide.		Storage at -20°C

BACKGROUND

Forms a nonselective cation channel . Can function as a homotetrameric ion channel or can form heteromer with PKD1 . Displays distinct function depending on its subcellular localization and regulation by its binding partners . In primary cilium functions as a cation channel, with a preference for monovalent cations over divalent cations that allows K(+), Na(+) and Ca(2+) influx, with low selectivity for Ca(2+) . Involved in fluid-flow mechanosensation by the primary cilium in renal epithelium . In the endoplasmic reticulum, likely functions as a K(+) channel to facilitate Ca(2+) release . The heterotetrameric PKD1/PKD2 channel has higher Ca(2+) permeability than homomeric PKD2 channel and acts as a primarily Ca(2+)-permeable channel .

APPLICATION

To ensure optimal assay performance, AREX recommends conducting reagent titration tailored to each testing system for optimal detection results.

WB	1:500 - 1:2000
----	----------------

*Results are sample-specific. Please refer to your local assay conditions and test parameters for reference.

PRODUCT OVERVIEW

Description	Rabbit polyclonal antibody to Polycystin 2
Specificity	Recognizes endogenous levels of Polycystin 2 protein.
Antibody Type	Primary antibody
Immunogen	Recombinant fusion protein of human Polycystin 2
Purification	The antibody was purified by immunogen affinity chromatography.
Molecular Weight	Predicted: 53; Observed: 110 kD
Form/Buffer	Liquid in 0.42% Potassium phosphate, 0.87% Sodium chloride, pH 7.3, 30% glycerol, and 0.01% sodium azide.
Alternative Names	Polycystin-2; Autosomal dominant polycystic kidney disease type II protein; Polycystic kidney disease 2 protein; Polycystwin; R48321
Gene Symbol	PKD2
Entrez Gene	5311(Human); 18764(Mouse)
SwissProt	Q13563(Human); O35245(Mouse)

*AREX continuously optimizes our products. Webpage content may not reflect the latest updates. For inquiries, please contact info@arexbio.com or your local distributor.

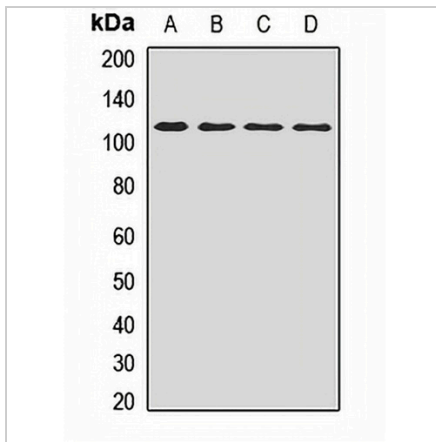
*Clone Number, Reactivity, Source/Host and Clonality can be found in the product name and Key Features section above.

DATASHEET

Polycystin 2 Rabbit Polyclonal Antibody

CAT. NO. APA14300

DATA



Western blot analysis of Polycystin 2 expression in MCF7 (A), HepG2 (B), mouse kidney (C), rat brain (D) whole cell lysates. (Predicted band size: 53; 73; 98; 103; 109 kD; Observed band size: 110 kD)

STORAGE

Store at 4°C short term. For long term storage, store at -20°C, avoiding freeze/thaw cycles.

NOTE

For Research Use Only. Not for diagnostic, therapeutics, prophylactic or in vivo use.