

DATASHEET

Plastin Rabbit Polyclonal Antibody

CAT. NO. APA14301

KEY FEATURES

Target	Plastin	Source / Host	Rabbit
Reactivity	Human, Mouse, Rat	Clonality	Polyclonal
Applications	WB, IP	Conjugation	Unconjugated
Form / Buffer	Liquid in 0.42% Potassium phosphate, 0.87% Sodium chloride, pH 7.3, 30% glycerol, and 0.01% sodium azide.		Storage at -20°C

BACKGROUND

Actin-bundling protein.

APPLICATION

To ensure optimal assay performance, AREX recommends conducting reagent titration tailored to each testing system for optimal detection results.

WB	1:500 - 1:1000
IP	1:10 - 1:50

*Results are sample-specific. Please refer to your local assay conditions and test parameters for reference.

PRODUCT OVERVIEW

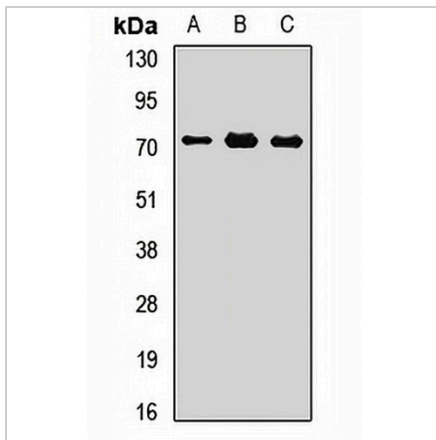
Description	Rabbit polyclonal antibody to Plastin
Specificity	Recognizes endogenous levels of Plastin protein.
Antibody Type	Primary antibody
Immunogen	Recombinant fusion protein of human Plastin
Purification	The antibody was purified by immunogen affinity chromatography.
Molecular Weight	Predicted: 65; Observed: 71 kD
Form/Buffer	Liquid in 0.42% Potassium phosphate, 0.87% Sodium chloride, pH 7.3, 30% glycerol, and 0.01% sodium azide.
Alternative Names	Plastin-3; T-plastin
Gene Symbol	PLS3
Entrez Gene	5358(Human); 102866(Mouse)
SwissProt	P13797(Human); Q99K51(Mouse); Q63598(Rat)

*AREX continuously optimizes our products. Webpage content may not reflect the latest updates. For inquiries, please contact info@arexbio.com or your local distributor.

*Clone Number, Reactivity, Source/Host and Clonality can be found in the product name and Key Features section above.

DATASHEET**Plastin Rabbit Polyclonal Antibody**

CAT. NO. APA14301

DATA

Western blot analysis of Plastin expression in MCF7 (A), A431 (B), HepG2 (C) whole cell lysates. (Predicted band size: 65; 69; 70 kD; Observed band size: 71 kD)

STORAGE

Store at 4°C short term. For long term storage, store at -20°C, avoiding freeze/thaw cycles.

NOTE

For Research Use Only. Not for diagnostic, therapeutics, prophylactic or in vivo use.