

DATASHEET

RhoGDI beta Rabbit Polyclonal Antibody

CAT. NO. APA14305

KEY FEATURES

| | | | |
|---------------|---|---------------|---------------------|
| Target | RhoGDI beta | Source / Host | Rabbit |
| Reactivity | Human, Mouse | Clonality | Polyclonal |
| Applications | WB | Conjugation | Unconjugated |
| Form / Buffer | Liquid in 0.42% Potassium phosphate, 0.87% Sodium chloride, pH 7.3, 30% glycerol, and 0.01% sodium azide. | | Storage at -20°C |

BACKGROUND

Regulates the GDP/GTP exchange reaction of the Rho proteins by inhibiting the dissociation of GDP from them, and the subsequent binding of GTP to them . Regulates reorganization of the actin cytoskeleton mediated by Rho family members .

APPLICATION

To ensure optimal assay performance, AREX recommends conducting reagent titration tailored to each testing system for optimal detection results.

| | |
|----|----------------|
| WB | 1:500 - 1:2000 |
|----|----------------|

*Results are sample-specific. Please refer to your local assay conditions and test parameters for reference.

PRODUCT OVERVIEW

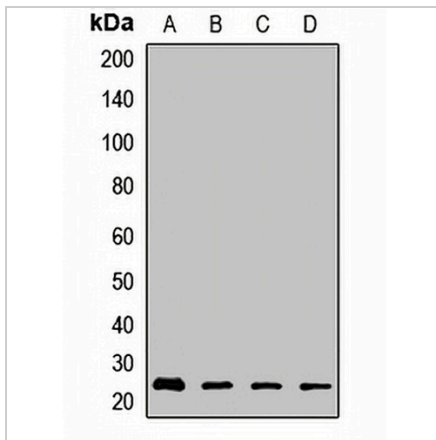
| | |
|-------------------|---|
| Description | Rabbit polyclonal antibody to RhoGDI beta |
| Specificity | Recognizes endogenous levels of RhoGDI beta protein. |
| Antibody Type | Primary antibody |
| Immunogen | Recombinant fusion protein of human RhoGDI beta |
| Purification | The antibody was purified by immunogen affinity chromatography. |
| Molecular Weight | Predicted: 22 kD; Observed: 23 kD |
| Form/Buffer | Liquid in 0.42% Potassium phosphate, 0.87% Sodium chloride, pH 7.3, 30% glycerol, and 0.01% sodium azide. |
| Alternative Names | GDIA2; GDID4; RAP1GN1; Rho GDP-dissociation inhibitor 2; Rho GDI 2; Ly-GDI; Rho-GDI beta |
| Gene Symbol | ARHGDIB |
| Entrez Gene | 397(Human); 11857(Mouse) |
| SwissProt | P52566(Human); Q61599(Mouse) |

*AREX continuously optimizes our products. Webpage content may not reflect the latest updates. For inquiries, please contact info@arexbio.com or your local distributor.

*Clone Number, Reactivity, Source/Host and Clonality can be found in the product name and Key Features section above.

DATASHEET**RhoGDI beta Rabbit Polyclonal Antibody**

CAT. NO. APA14305

DATA

Western blot analysis of RhoGDI beta expression in Raji (A), HL60 (B), mouse brain (C), mouse lung (D) whole cell lysates. (Predicted band size: 22 kD; Observed band size: 23 kD)

STORAGE

Store at 4°C short term. For long term storage, store at -20°C, avoiding freeze/thaw cycles.

NOTE

For Research Use Only. Not for diagnostic, therapeutics, prophylactic or in vivo use.