

DATASHEET

ASNA1 Rabbit Polyclonal Antibody

CAT. NO. APA14306

KEY FEATURES

Target	ASNA1	Source / Host	Rabbit
Reactivity	Human, Mouse, Rat	Clonality	Polyclonal
Applications	WB, IF/ICC	Conjugation	Unconjugated
Form / Buffer	Liquid in 0.42% Potassium phosphate, 0.87% Sodium chloride, pH 7.3, 30% glycerol, and 0.01% sodium azide.		Storage at -20°C

BACKGROUND

ATPase required for the post-translational delivery of tail-anchored (TA) proteins to the endoplasmic reticulum proteins to the endoplasmic reticulum . Recognizes and selectively binds the transmembrane domain of TA proteins in the cytosol. This complex then targets to the endoplasmic reticulum by membrane-bound receptors GET1/WRB and CAMLG/GET2, where the tail-anchored protein is released for insertion. This process is regulated by ATP binding and hydrolysis. ATP binding drives the homodimer towards the closed dimer state, facilitating recognition of newly synthesized TA membrane proteins. ATP hydrolysis is required for insertion.

APPLICATION

To ensure optimal assay performance, AREX recommends conducting reagent titration tailored to each testing system for optimal detection results.

WB	1:500 - 1:1000
IF/ICC	1:50 - 1:200

*Results are sample-specific. Please refer to your local assay conditions and test parameters for reference.

PRODUCT OVERVIEW

Description	Rabbit polyclonal antibody to ASNA1
Specificity	Recognizes endogenous levels of ASNA1 protein.
Antibody Type	Primary antibody
Immunogen	Recombinant fusion protein of human ASNA1
Purification	The antibody was purified by immunogen affinity chromatography.
Molecular Weight	Predicted: 38 kD; Observed: 39 kD
Form/Buffer	Liquid in 0.42% Potassium phosphate, 0.87% Sodium chloride, pH 7.3, 30% glycerol, and 0.01% sodium azide.
Alternative Names	ARSA; TRC40; ATPase ASNA1; Arsenical pump-driving ATPase; Arsenite-stimulated ATPase; Transmembrane domain recognition complex 40 kDa ATPase subunit; hARSA-I; hASNA-I
Gene Symbol	ASNA1
Entrez Gene	439(Human); 56495(Mouse)
SwissProt	O43681(Human); O54984(Mouse)

*AREX continuously optimizes our products. Webpage content may not reflect the latest updates. For inquiries, please contact info@arexbio.com or your local distributor.

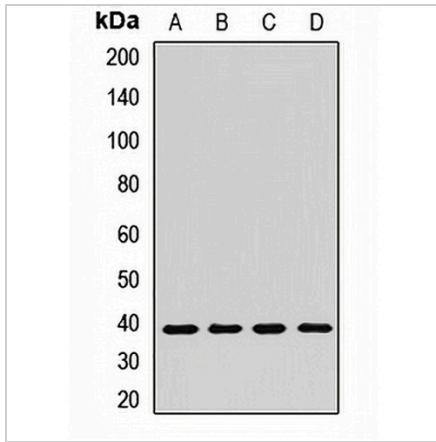
*Clone Number, Reactivity, Source/Host and Clonality can be found in the product name and Key Features section above.

DATASHEET

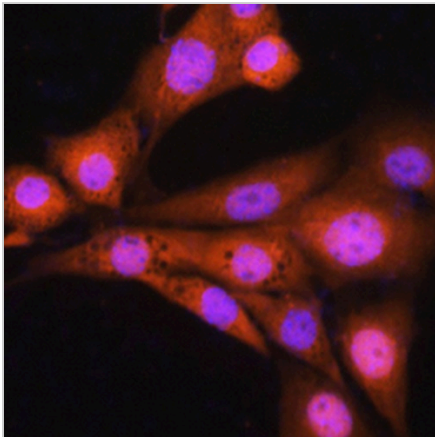
ASNA1 Rabbit Polyclonal Antibody

CAT. NO. APA14306

DATA



Western blot analysis of ASNA1 expression in MCF7 (A), mouse kidney (B), mouse lung (C), rat brain (D) whole cell lysates. (Predicted band size: 38 kD; Observed band size: 39 kD)



Immunofluorescent analysis of ASNA1 staining in NIH3T3 cells. Formalin-fixed cells were permeabilized with 0.1% Triton X-100 in TBS for 5-10 minutes and blocked with 3% BSA-PBS for 30 minutes at room temperature. Cells were probed with the primary antibody in 3% BSA-PBS and incubated overnight at 4 °C in a humidified chamber. Cells were washed with PBST and incubated with a AREX® Fluor 594-conjugated secondary antibody (red) in PBS at room temperature in the dark. DAPI was used to stain the cell nuclei (blue).

STORAGE

Store at 4°C short term. For long term storage, store at -20°C, avoiding freeze/thaw cycles.

NOTE

For Research Use Only. Not for diagnostic, therapeutics, prophylactic or in vivo use.