

DATASHEET

ATP6V1B2 Rabbit Polyclonal Antibody

CAT. NO. APA14307

KEY FEATURES

Target	ATP6V1B2	Source / Host	Rabbit
Reactivity	Human, Mouse, Rat	Clonality	Polyclonal
Applications	WB	Conjugation	Unconjugated
Form / Buffer	Liquid in 0.42% Potassium phosphate, 0.87% Sodium chloride, pH 7.3, 30% glycerol, and 0.01% sodium azide.		Storage at -20°C

BACKGROUND

Non-catalytic subunit of the V1 complex of vacuolar(H⁺)-ATPase (V-ATPase), a multisubunit enzyme composed of a peripheral complex (V1) that hydrolyzes ATP and a membrane integral complex (V0) that translocates protons -ATPase (V-ATPase), a multisubunit enzyme composed of a peripheral complex (V1) that hydrolyzes ATP and a membrane integral complex (V0) that translocates protons . V-ATPase is responsible for acidifying and maintaining the pH of intracellular compartments and in some cell types, is targeted to the plasma membrane, where it is responsible for acidifying the extracellular environment . In renal intercalated cells, can partially compensate the lack of ATP6V1B1 and mediate secretion of protons (H⁺) into the urine under base-line conditions but not in conditions of acid load .

APPLICATION

To ensure optimal assay performance, AREX recommends conducting reagent titration tailored to each testing system for optimal detection results.

WB	1:500 - 1:1000
----	----------------

*Results are sample-specific. Please refer to your local assay conditions and test parameters for reference.

PRODUCT OVERVIEW

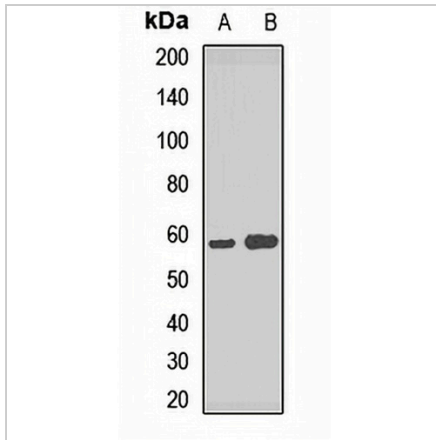
Description	Rabbit polyclonal antibody to ATP6V1B2
Specificity	Recognizes endogenous levels of ATP6V1B2 protein.
Antibody Type	Primary antibody
Immunogen	Recombinant fusion protein of human ATP6V1B2
Purification	The antibody was purified by immunogen affinity chromatography.
Molecular Weight	Predicted: 56 kD; Observed: 57 kD
Form/Buffer	Liquid in 0.42% Potassium phosphate, 0.87% Sodium chloride, pH 7.3, 30% glycerol, and 0.01% sodium azide.
Alternative Names	ATP6B2; VPP3; V-type proton ATPase subunit B, brain isoform; V-ATPase subunit B 2; Endomembrane proton pump 58 kDa subunit; HO57; Vacuolar proton pump subunit B 2
Gene Symbol	ATP6V1B2
Entrez Gene	526(Human); 11966(Mouse); 117596(Rat)
SwissProt	P21281(Human); P62814(Mouse); P62815(Rat)

*AREX continuously optimizes our products. Webpage content may not reflect the latest updates. For inquiries, please contact info@arexbio.com or your local distributor.

*Clone Number, Reactivity, Source/Host and Clonality can be found in the product name and Key Features section above.

DATASHEET**ATP6V1B2 Rabbit Polyclonal Antibody**

CAT. NO. APA14307

DATA

Western blot analysis of ATP6V1B2 expression in mouse brain (A), rat brain (B) whole cell lysates. (Predicted band size: 56 kD; Observed band size: 57 kD)

STORAGE

Store at 4°C short term. For long term storage, store at -20°C, avoiding freeze/thaw cycles.

NOTE

For Research Use Only. Not for diagnostic, therapeutics, prophylactic or in vivo use.