

DATASHEET

CKS2 Rabbit Polyclonal Antibody

CAT. NO. APA14312

KEY FEATURES

Target	CKS2	Source / Host	Rabbit
Reactivity	Rat	Clonality	Polyclonal
Applications	WB	Conjugation	Unconjugated
Form / Buffer	Liquid in 0.42% Potassium phosphate, 0.87% Sodium chloride, pH 7.3, 30% glycerol, and 0.01% sodium azide.		Storage at -20°C

BACKGROUND

Binds to the catalytic subunit of the cyclin dependent kinases and is essential for their biological function.

APPLICATION

To ensure optimal assay performance, AREX recommends conducting reagent titration tailored to each testing system for optimal detection results.

WB	1:500 - 1:1000
----	----------------

*Results are sample-specific. Please refer to your local assay conditions and test parameters for reference.

PRODUCT OVERVIEW

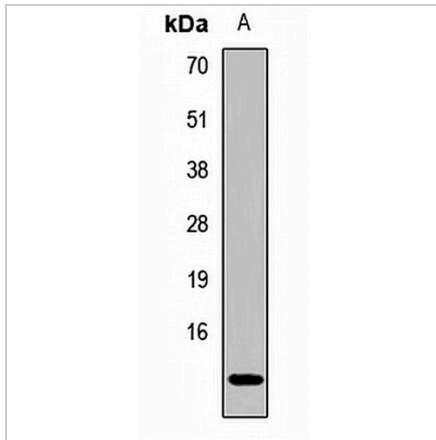
Description	Rabbit polyclonal antibody to CKS2
Specificity	Recognizes endogenous levels of CKS2 protein.
Antibody Type	Primary antibody
Immunogen	Recombinant fusion protein of human CKS2
Purification	The antibody was purified by immunogen affinity chromatography.
Molecular Weight	Predicted: 9 kD; Observed: 14 kD
Form/Buffer	Liquid in 0.42% Potassium phosphate, 0.87% Sodium chloride, pH 7.3, 30% glycerol, and 0.01% sodium azide.
Alternative Names	Cyclin-dependent kinases regulatory subunit 2; CKS-2
Gene Symbol	CKS2
Entrez Gene	1164(Human)
SwissProt	P33552(Human)

*AREX continuously optimizes our products. Webpage content may not reflect the latest updates. For inquiries, please contact info@arexbio.com or your local distributor.

*Clone Number, Reactivity, Source/Host and Clonality can be found in the product name and Key Features section above.

DATASHEET**CKS2 Rabbit Polyclonal Antibody**

CAT. NO. APA14312

DATA

Western blot analysis of CKS2 expression in rat liver (A) whole cell lysates. (Predicted band size: 9 kD; Observed band size: 14 kD)

STORAGE

Store at 4°C short term. For long term storage, store at -20°C, avoiding freeze/thaw cycles.

NOTE

For Research Use Only. Not for diagnostic, therapeutics, prophylactic or in vivo use.