

## DATASHEET

# Clathrin Light Chain A Rabbit Polyclonal Antibody

CAT. NO. APA14313

### KEY FEATURES

Target	Clathrin Light Chain A	Source / Host	Rabbit
Reactivity	Human	Clonality	Polyclonal
Applications	WB	Conjugation	Unconjugated
Form / Buffer	Liquid in 0.42% Potassium phosphate, 0.87% Sodium chloride, pH 7.3, 30% glycerol, and 0.01% sodium azide.		Storage at-20°C

### BACKGROUND

Clathrin is the major protein of the polyhedral coat of coated pits and vesicles. Acts as a component of the TACC3/ch-TOG/clathrin complex proposed to contribute to stabilization of kinetochore fibers of the mitotic spindle by acting as inter-microtubule bridge .

### APPLICATION

To ensure optimal assay performance, AREX recommends conducting reagent titration tailored to each testing system for optimal detection results.

WB	1:500 - 1:2000
----	----------------

\*Results are sample-specific. Please refer to your local assay conditions and test parameters for reference.

### PRODUCT OVERVIEW

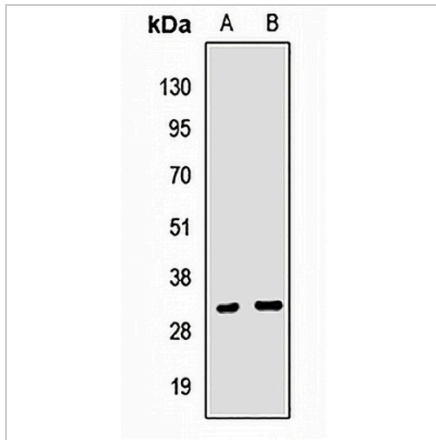
Description	Rabbit polyclonal antibody to Clathrin Light Chain A
Specificity	Recognizes endogenous levels of Clathrin Light Chain A protein.
Antibody Type	Primary antibody
Immunogen	Recombinant fusion protein of human Clathrin Light Chain A
Purification	The antibody was purified by immunogen affinity chromatography.
Molecular Weight	Predicted: 17; Observed: 33 kD
Form/Buffer	Liquid in 0.42% Potassium phosphate, 0.87% Sodium chloride, pH 7.3, 30% glycerol, and 0.01% sodium azide.
Alternative Names	Clathrin light chain A; Lca
Gene Symbol	CLTA
Entrez Gene	1211(Human)
SwissProt	P09496(Human)

\*AREX continuously optimizes our products. Webpage content may not reflect the latest updates. For inquiries, please contact [info@arexbio.com](mailto:info@arexbio.com) or your local distributor.

\*Clone Number, Reactivity, Source/Host and Clonality can be found in the product name and Key Features section above.

**DATASHEET****Clathrin Light Chain A Rabbit Polyclonal Antibody**

CAT. NO. APA14313

**DATA**

Western blot analysis of Clathrin Light Chain A expression in HeLa (A), A549 (B) whole cell lysates. (Predicted band size: 17; 23; 24; 25; 27 kD; Observed band size: 33 kD)

**STORAGE**

Store at 4°C short term. For long term storage, store at -20°C, avoiding freeze/thaw cycles.

**NOTE**

For Research Use Only. Not for diagnostic, therapeutics, prophylactic or in vivo use.