

DATASHEET

CPOX Rabbit Polyclonal Antibody

CAT. NO. APA14315

KEY FEATURES

Target	CPOX	Source / Host	Rabbit
Reactivity	Human, Mouse, Rat	Clonality	Polyclonal
Applications	WB, IHC	Conjugation	Unconjugated
Form / Buffer	Liquid in 0.42% Potassium phosphate, 0.87% Sodium chloride, pH 7.3, 30% glycerol, and 0.01% sodium azide.		Storage at -20°C

BACKGROUND

Catalyzes the aerobic oxidative decarboxylation of propionate groups of rings A and B of coproporphyrinogen-III to yield the vinyl groups in protoporphyrinogen-IX and participates to the sixth step in the heme biosynthetic pathway.

APPLICATION

To ensure optimal assay performance, AREX recommends conducting reagent titration tailored to each testing system for optimal detection results.

WB	1:500 - 1:2000
IHC	1:50 - 1:200

*Results are sample-specific. Please refer to your local assay conditions and test parameters for reference.

PRODUCT OVERVIEW

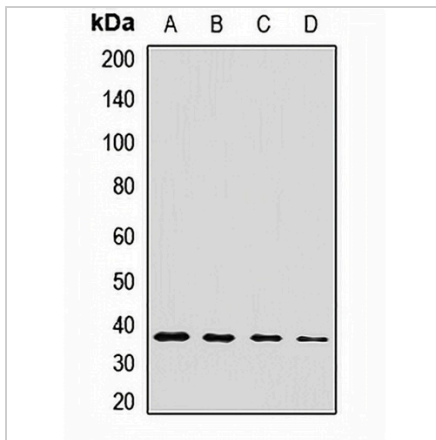
Description	Rabbit polyclonal antibody to CPOX
Specificity	Recognizes endogenous levels of CPOX protein.
Antibody Type	Primary antibody
Immunogen	Recombinant fusion protein of human CPOX
Purification	The antibody was purified by immunogen affinity chromatography.
Molecular Weight	Predicted: 30; Observed: 36 kD
Form/Buffer	Liquid in 0.42% Potassium phosphate, 0.87% Sodium chloride, pH 7.3, 30% glycerol, and 0.01% sodium azide.
Alternative Names	CPO; CPX; Oxygen-dependent coproporphyrinogen-III oxidase mitochondrial; COX; Coprogen oxidase; Coproporphyrinogenase
Gene Symbol	CPOX
Entrez Gene	1371(Human); 12892(Mouse); 304024(Rat)
SwissProt	P36551(Human); P36552(Mouse); Q3B7D0(Rat)

*AREX continuously optimizes our products. Webpage content may not reflect the latest updates. For inquiries, please contact info@arexbio.com or your local distributor.

*Clone Number, Reactivity, Source/Host and Clonality can be found in the product name and Key Features section above.

DATASHEET**CPOX Rabbit Polyclonal Antibody**

CAT. NO. APA14315

DATA

Western blot analysis of CPOX expression in HepG2 (A), A549 (B), mouse liver (C), rat liver (D) whole cell lysates. (Predicted band size: 30; 50 kD; Observed band size: 36 kD)

STORAGE

Store at 4°C short term. For long term storage, store at -20°C, avoiding freeze/thaw cycles.

NOTE

For Research Use Only. Not for diagnostic, therapeutics, prophylactic or in vivo use.