

**DATASHEET**

**CYLD Rabbit Polyclonal Antibody**

CAT. NO. APA14317

**KEY FEATURES**

Target	CYLD	Source / Host	Rabbit
Reactivity	Human, Mouse, Rat	Clonality	Polyclonal
Applications	WB, IHC	Conjugation	Unconjugated
Form / Buffer	Liquid in 0.42% Potassium phosphate, 0.87% Sodium chloride, pH 7.3, 30% glycerol, and 0.01% sodium azide.		Storage at -20°C

**BACKGROUND**

Deubiquitinase that specifically cleaves 'Lys-63'- and linear 'Met-1'-linked polyubiquitin chains and is involved in NF-kappa-B activation and TNF-induced necroptosis . Negatively regulates NF-kappa-B activation by deubiquitinating upstream signaling factors . Contributes to the regulation of cell survival, proliferation and differentiation via its effects on NF-kappa-B activation . Negative regulator of Wnt signaling . Inhibits HDAC6 and thereby promotes acetylation of alpha-tubulin and stabilization of microtubules . Plays a role in the regulation of microtubule dynamics, and thereby contributes to the regulation of cell proliferation, cell polarization, cell migration, and angiogenesis . Required for normal cell cycle progress and normal cytokinesis .

**APPLICATION**

To ensure optimal assay performance, AREX recommends conducting reagent titration tailored to each testing system for optimal detection results.

WB	1:500 - 1:2000
IHC	1:50 - 1:200

\*Results are sample-specific. Please refer to your local assay conditions and test parameters for reference.

**PRODUCT OVERVIEW**

Description	Rabbit polyclonal antibody to CYLD
Specificity	Recognizes endogenous levels of CYLD protein.
Antibody Type	Primary antibody
Immunogen	Recombinant fusion protein of human CYLD
Purification	The antibody was purified by immunogen affinity chromatography.
Molecular Weight	Predicted: 107 kD; Observed: 107 kD
Form/Buffer	Liquid in 0.42% Potassium phosphate, 0.87% Sodium chloride, pH 7.3, 30% glycerol, and 0.01% sodium azide.
Alternative Names	CYLD1; KIAA0849; Ubiquitin carboxyl-terminal hydrolase CYLD; Deubiquitinating enzyme CYLD; Ubiquitin thioesterase CYLD; Ubiquitin-specific-processing protease CYLD
Gene Symbol	CYLD
Entrez Gene	1540(Human); 74256(Mouse); 312937(Rat)
SwissProt	Q9NQC7(Human); Q80TQ2(Mouse); Q66H62(Rat)

\*AREX continuously optimizes our products. Webpage content may not reflect the latest updates. For inquiries, please contact [info@arexbio.com](mailto:info@arexbio.com) or your local distributor.

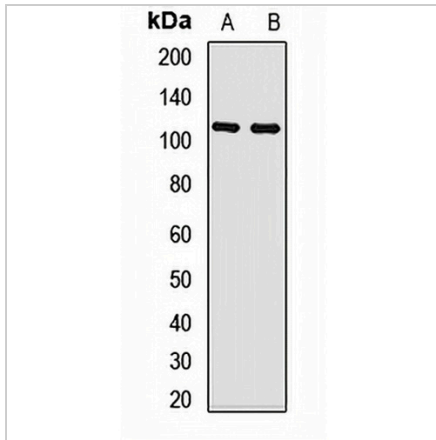
\*Clone Number, Reactivity, Source/Host and Clonality can be found in the product name and Key Features section above.

**DATASHEET**

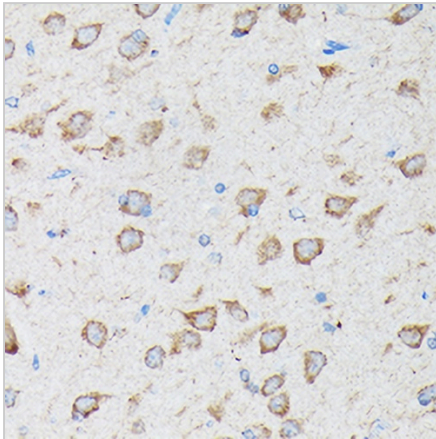
**CYLD Rabbit Polyclonal Antibody**

CAT. NO. APA14317

**DATA**



Western blot analysis of CYLD expression in HeLa (A), mouse kidney (B) whole cell lysates. (Predicted band size: 107 kD; Observed band size: 107 kD)



Immunohistochemical analysis of CYLD staining in rat brain formalin fixed paraffin embedded tissue section. The section was pre-treated using heat mediated antigen retrieval with sodium citrate buffer (pH 6.0). The section was then incubated with the antibody at room temperature and detected using an HRP conjugated compact polymer system. DAB was used as the chromogen. The section was then counterstained with haematoxylin and mounted with DPX.

**STORAGE**

Store at 4°C short term. For long term storage, store at -20°C, avoiding freeze/thaw cycles.

**NOTE**

For Research Use Only. Not for diagnostic, therapeutics, prophylactic or in vivo use.