

**DATASHEET**

**EIF4A2 Rabbit Polyclonal Antibody**

CAT. NO. APA14320

**KEY FEATURES**

Target	EIF4A2	Source / Host	Rabbit
Reactivity	Human, Mouse, Rat	Clonality	Polyclonal
Applications	WB	Conjugation	Unconjugated
Form / Buffer	Liquid in 0.42% Potassium phosphate, 0.87% Sodium chloride, pH 7.3, 30% glycerol, and 0.01% sodium azide.		Storage at -20°C

**BACKGROUND**

ATP-dependent RNA helicase which is a subunit of the eIF4F complex involved in cap recognition and is required for mRNA binding to ribosome. In the current model of translation initiation, eIF4A unwinds RNA secondary structures in the 5'-UTR of mRNAs which is necessary to allow efficient binding of the small ribosomal subunit, and subsequent scanning for the initiator codon.

**APPLICATION**

To ensure optimal assay performance, AREX recommends conducting reagent titration tailored to each testing system for optimal detection results.

WB	1:500 - 1:1000
----	----------------

\*Results are sample-specific. Please refer to your local assay conditions and test parameters for reference.

**PRODUCT OVERVIEW**

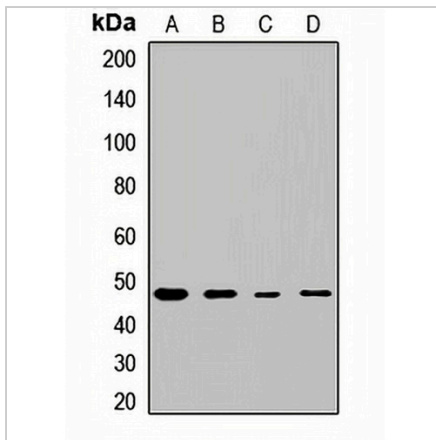
Description	Rabbit polyclonal antibody to EIF4A2
Specificity	Recognizes endogenous levels of EIF4A2 protein.
Antibody Type	Primary antibody
Immunogen	Recombinant fusion protein of human EIF4A2
Purification	The antibody was purified by immunogen affinity chromatography.
Molecular Weight	Predicted: 46 kD; Observed: 46 kD
Form/Buffer	Liquid in 0.42% Potassium phosphate, 0.87% Sodium chloride, pH 7.3, 30% glycerol, and 0.01% sodium azide.
Alternative Names	DDX2B; EIF4F; Eukaryotic initiation factor 4A-II; eIF-4A-II; eIF4A-II; ATP-dependent RNA helicase eIF4A-2
Gene Symbol	EIF4A2
Entrez Gene	1974(Human); 13682(Mouse); 303831(Rat)
SwissProt	Q14240(Human); P10630(Mouse); Q5RKI1(Rat)

\*AREX continuously optimizes our products. Webpage content may not reflect the latest updates. For inquiries, please contact [info@arexbio.com](mailto:info@arexbio.com) or your local distributor.

\*Clone Number, Reactivity, Source/Host and Clonality can be found in the product name and Key Features section above.

**DATASHEET****EIF4A2 Rabbit Polyclonal Antibody**

CAT. NO. APA14320

**DATA**

Western blot analysis of EIF4A2 expression in A549 (A), HepG2 (B), mouse brain (C), rat liver (D) whole cell lysates. (Predicted band size: 46 kD; Observed band size: 46 kD)

**STORAGE**

Store at 4°C short term. For long term storage, store at -20°C, avoiding freeze/thaw cycles.

**NOTE**

For Research Use Only. Not for diagnostic, therapeutics, prophylactic or in vivo use.